



Planning  
Institute  
Australia

**PIA**  
**PLANET.**®

 **VIC & TAS**



Professional  
Development  
Course Guide

**2026**

Welcome to another year of learning and development opportunities for professionals engaged in the planning industry.

---

# Course Guide

## 2026

### TAILORING YOUR PROFESSIONAL DEVELOPMENT




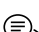

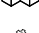
The PIA PLANET program is administered by the Planning Institute Australia (PIA). PIA PLANET provides popular core learning programs and keeps you up to date with legislative, regulatory and policy changes in planning.

Programs are added through the year and updates will be available online at [www.planning.org.au/events](http://www.planning.org.au/events)

### TAILORING YOUR LEARNING NEEDS

Planners play an integral role in shaping the future of our cities, towns and surrounds. Successful development outcomes require planners to have new competencies to enable the advancement of their skills in practice.

PLANET provides a comprehensive range of programs which cover six key skill areas that all great planners need to be competent in (and match with our Registered Planner pathway):

-  Professionalism and integrity
-  Spatial thinking
-  Creative and multidisciplinary approach
-  Communication and engagement
-  Planning frameworks
-  Technical knowlegde

PLANET presenters are subject matter experts who are skilled in facilitating training and providing a positive learning experience to improve your knowledge.

One of the best ways to improve your skills is to become informed of best practice models used by others. Our programs are developed to ensure improved practitioner skills through tailored practical workshop sessions. The learning model also provides training opportunities to address a range of personal skills gaps for career development.

### PLANET PROMOTES “BEST PRACTICE” IN URBAN PLANNING

One of the best ways to improve your skills is to become informed of best practice models used by others. Our programs are developed to ensure improved practitioner skills through tailoring practical workshop sessions. The learning model also provides training opportunities to address a range of personal skills gaps for career development.

PIA is committed to a number of strategic initiatives for 2026, including PlanTech and Indigenous Planning. As projects associated with these initiatives develop, we expect these themes will be reflected in PIA’s policy and advocacy, events and education outputs. As part of this, we are looking forward to developing and rolling out PLANET courses and other educational content reflecting these strategic initiatives in consultation with experts in our industry.

### WELCOME TO 2026 PIA PLANET!

Revamped after a big year of planning reform in Victoria, the 2026 program includes new presenters with a range of new courses, along with ever-popular core learning programs run by experts to help you build your knowledge and get up to speed with the changes.

Designed to build capability across key skill areas, PLANET helps planners stay current with legislative, regulatory and policy changes in planning, while strengthening practitioner skills through tailored practical workshop sessions.

Start planning your 2026 professional development calendar with these upcoming PLANET courses designed to keep you current and build practical capability.

Courses book out quickly and generous discounts are available for bulk bookings, just email us at [vic@planning.org.au](mailto:vic@planning.org.au).

## IMPORTANT INFORMATION BOOKINGS/STUDENTS/ CANCELLATIONS

PLANET bookings and payment should be made online via the PIA website. Course numbers are strictly limited so please book early to avoid disappointment. Full-time student members (with evidence) who wish to attend a program will be charged 50% of the scheduled fee. Please contact PIA to arrange.

If you cannot attend a course for which you are registered, you must cancel your registration no later than 14 days prior to the course. Registrations cancelled more than 14 days prior to the course date will not incur any fees and a full refund will be granted. If you cannot attend and you are within 14 days of the course date, you can transfer your registration to another PLANET course (of the same value) or to another person as a replacement attendee, provided we have at least 48 hours' notice of your decision to transfer.

If you do not attend on the day a full fee will be charged.

PIA requests payment of any outstanding invoices before you register for PLANET courses in 2026.

We can also offer generous discounts for bulk bookings. Contact State Manager Carmel McCormack on [carmel.mccormack@planning.org.au](mailto:carmel.mccormack@planning.org.au) or phone 9654 3777 to discuss your requirements.

Note: The price of courses includes GST.

Check the website ([www.planning.org.au](http://www.planning.org.au)/events) for updates to venues and start times.

## BULK MEMBERSHIP DISCOUNT

If you are an employer of Planners who supports professional association membership and have multiple staff who are members of PIA, discounts on the annual fee may be available. PIA encourages employers and members to enquire about a the 'bulk membership' discount. Email [membership@planning.org.au](mailto:membership@planning.org.au) or call 02 6262 5933 to find out more.

## PLANET TESTIMONIALS

Hear from 2025 PLANET attendees

### Introduction to urban revitalisation masterplanning

*"Presenters are practicing professionals with years of experience provided different but balanced and aligned perspectives whilst encouraging conversation and ensured that mostly everyone had an opportunity to contribute."*

### Community Infrastructure Planning 101

*"This course was one of, if not the best PLANET courses I have attended throughout my career. The presenters made the information easy to understand for people in differing roles and backgrounds, and from my perspective it allowed me to get a good understanding of a topic/area."*

### An Introduction to Planning with Country

*"This was a really great course. It gave me something to think about after the session and will probably stay with me forever."*

# Competency Practice Areas

Urban and Regional Planners apply a set of planning skills, draw upon a knowledge base, and use a variety of tools to facilitate and influence the way that the built environment is arranged spatially, connected and used.

Lifelong dedication to skill development in these practice areas helps create great planning outcomes. PIA focusses its educational content delivery to ensure development across these areas.



## Professionalism and integrity

Demonstrate responsibility and resourcefulness, initiative, judgment, substantial involvement and personal accountability consistent with the expectations of the planning profession and the community when engaged in planning roles and activities.



## Spatial thinking

Apply planning theory and skills in support of strategic objectives to achieve social, economic and environmental outcomes that serve the public agenda.



## Creative and multidisciplinary approach

Develop innovative, multidisciplinary, evidence-based and integrative outcomes to facilitate and influence social and economic development, community wellbeing and environmental responsibility.



## Communication and engagement

Communicate effectively with stakeholders to inform, consult and engage them in planning processes.



## Planning frameworks

Understand and work within legislative and other relevant frameworks appropriate to their context and professional application.



## Technical knowledge

Integrate and apply knowledge from a range of planning related skills and disciplines to develop well-informed approaches to planning roles, opportunities and issues.

# Additional Information

## PLANNING INSTITUTE AUSTRALIA

Founded in 1951 as the Royal Australian Planning Institute, PIA is the national body representing local, regional, state and national planning within the public and private sectors.

Our mission is to foster and develop a strong planning profession and to champion the importance of good planning. We do this by advocating for better planning, developing high quality planners, and supporting the profession.

We believe that good planning embraces good principles, uses robust systems and engages all stakeholders. PIA membership is an investment in you, your career and the industry. Membership is available in a range of grades based on levels of qualification, experience and industry sector. Membership is designed to support and assist you throughout your career.

You can join PIA as either a Member or Associate. Each class is made up of a number of grades to allow for professional growth, regardless of your current career experience.

[planning.org.au/membership](http://planning.org.au/membership)

## HOW DO I BECOME A REGISTERED PLANNER?

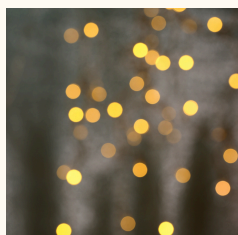
Registered Planner is PIA's highest membership grade. It recognises and promotes Australia's top planning professionals, and was launched in April 2016 after two years' consultation with our membership.

Registered Planner enables high-calibre planners to clearly and unequivocally demonstrate their competencies and their commitment to professional growth, development and ethical practice.

Registered Planner is open to PIA Full Members who can demonstrate five years professional experience and assessment of competency against six key practice areas that cover the skills and knowledge of good planning. You must also demonstrate your commitment to Continuing Professional Development (CPD) by completing a CPD Plan.



SCAN THE QR CODE TO CHECK OUT OUR ONLINE PLANET PAGE.  
NEW COURSES ARE ADDED THROUGHOUT THE YEAR.  
DON'T MISS OUT!



## 2026 Local Government Planners' Dinner

Friday 8 May 2026  
7:00pm - 11:00pm  
Leonda by the Yarra

# PLANET Contents by Category

## 2026

### PLANNING SYSTEM

Planning Scheme Reviews	9
The A-Z of Planning	9
Crime Prevention Through Environmental Design for Planners - Using the new ISO 22341 standard	10
A-Z of the Development Process	11
AI in Town Planning and Development for Beginners	11
Mega (Transport) Projects – The inside story	12
Presenting to a Planning Panel	13
Local policy and schedules in planning schemes	14
Subdivision for Planners	14
Public Transport Planning	15
Tips and tricks for drafting overlay schedules	16

### APPLICATION ASSESSMENTS

Environmental Impact Assessment (EIA)	17
Planning Permit Assessment: An Introduction	17
Parking Requirements, Overlays & Waivers	18
Using the Residential Development Provisions	19
Navigating Major Infrastructure Approvals: EES, Secondary Approvals and Compliance in Practice	20
Preparing & Assessing a Bushfire Management Statement	21
Landscape & Visual Impact Assessment	22
Statewide Stormwater Provisions in the Planning Scheme	23

### PLANNING LAW

Understanding Development Contributions	24
---	----

# PLANET Contents by Category

## 2026

Enforcement Law for Planners	24
Flooding – considering planning applications	25
VCAT - A skills-based approach to advocating at the Tribunal	25
Existing Use Rights	26
Section 173 Agreements Unpacked	26
Planning Law for Planners	27
Understanding the value of and presenting expert evidence	27

### STRATEGIC PLANNING

Planning for settlement and housing growth	29
Social Planning: Its Role in the Planning System	29
Understanding Growth Area Planning	30
Community Infrastructure Planning 101	31
Managing Development Near Landfills and Other Buffers	32
An introduction to Planning with Country for Allies	33
Planning and Design Using the Movement and Place Approach	33
Planning for flood in a time of change	34
Managing Potentially Contaminated Land	35
Project management for planners	36

### DESIGN

Introduction to urban revitalisation masterplanning	37
Open Spaces: Less Strategies - More Strategic	37

### ECONOMICS

Introduction to development feasibility	38
---	----

# PLANET Contents by Category

## 2026

The taxing question of land and property – what planners need to know about land & property taxation	38
Investing in Transport	39
Practical GIS for Planning: Map Creation	40
Applied GIS Analysis & Cartography for Planning	41
Evidence-Based Planning with GIS Data	42
Census & Demographics for Strategic Planning	42

### SUSTAINABILITY

Urban ecology and biodiversity for planners	44
Planning for Resilient Urban Forests	44

### HERITAGE

Aboriginal Cultural Heritage- An overview of requirements and responsibilities for planners working in LGAs'	46
Working with the Heritage Overlay and your heritage advisor	46
Strategic Heritage Planning: Values, Models and Contemporary Challenges	47

### COMMUNICATION & ENGAGEMENT

Smarter Reports with Generative AI	48
Facilitation Skills for Planners	49
Working with conflict	49
Dashboard Design and Development for Planners	50
Emotional Fitness	51



SCAN THE QR CODE TO CHECK OUT OUR ONLINE PLANET PAGE.  
NEW COURSES ARE ADDED THROUGHOUT THE YEAR.  
DON'T MISS OUT!

## PLANNING SYSTEM

### PLANNING SCHEME REVIEWS

Planning scheme reviews should be completed every four years, with the next one due in October 2026. The course will teach a six step process to undertake a meaningful and thorough planning scheme review in a cost and time effective way, drawing on published advice from DTP and experience from many Council reviews across the state.

You will understand how to identify and strategically justify changes that need to be made to your planning scheme, and other actions that need to be taken to implement the findings of the planning scheme review. You will leave this course with a guide and templates to help you with your next review.

#### DESIGNED FOR

Strategic and statutory planners.

#### LEARNING OUTCOMES

- Understand the scope of planning scheme reviews.
- Develop skills to identify where planning schemes aren't operating efficiently.
- Identify issues that need to be addressed to improve a planning scheme.
- Develop skills in delivering a cost and time effective planning scheme review.
- Understand different ways planning scheme reviews get implemented.
- Understand the wide range of tools and advice available from DTP and other sources to support a planning scheme review process.

#### COMPETENCY PRACTICE AREA

Understanding, interpreting and using spatial thinking.

#### COURSE PRESENTER

##### **Cazz Redding MPIA (Fellow), Director, Schemology**

Cazz Redding runs Schemology (formerly known as Redink Planning), a town-planning consultancy based in north-east Victoria focussing on project management, strategic planning, drafting of planning scheme controls and training planners.

Cazz is an innovator and always on the lookout for better ways of doing things, to achieve efficiency in systems and processes, and deliver high quality outcomes for communities. She's a systems thinker and has the rare ability to excel in both the strategic planning space and the detailed delivery mechanisms. In the last two decades Cazz has educated hundreds of planners at RMIT and through the PLANET program and has an open, honest and generous delivery style that keeps participants engaged and creates a safe environment to ask questions and explore ideas.

#### Date

Thursday, 19 March 2026

#### Time

9.30am - 5:00pm

#### Delivery

Online - Hosted from VIC

#### Price

PIA Members \$345  
Non-members \$570

7  
CPD  
POINTS

### THE A-Z OF PLANNING

This course is for new people entering the planning system in Victoria. It covers the difference between the statutory and strategic context of the Victorian planning system, the layers of policy and the day-to-day process requirements of the planning office including statutory processes, decision making, enforcement and VCAT procedures. Practical workshops will cover scenarios for the application of zones and overlays and permit requirements, with a focus on most frequently asked questions. An overview of recent significant planning reforms will be provided.

#### DESIGNED FOR

New people entering the planning system in Victoria, allied professions, such as officers of referral authorities, new planners, planning assistants and administrative officers in local government and Councillors would benefit most from this overview of practical skills to cope with the day-to-day requirements of using Victoria's planning system.

#### LEARNING OUTCOMES

- Recognise the principles of the planning process
- Understand the role of the council, decision making and delegations
- Recognise the components of planning schemes and their application
- Interpret relevant planning legislation and the role of referral authorities
- Understand the differences between the application of zones and overlays
- Identify the permit process including advertising, conditions, referrals and the relevance of planning scheme amendments
- Understand enforcement and the VCAT process
- Comprehend the use of schedules and definitions
- Distinguish between the strategic and statutory elements of the planning scheme.

## PLANNING SYSTEM

**Note:** Participants are advised that this is a generic guide to planning processes. Other PLANET courses are available on the detailed processes.

### COMPETENCY PRACTICE AREA

Understanding and working with planning frameworks

### COURSE PRESENTER

**Cazz Redding MPIA (Fellow), Director, Schemology**  
Cazz Redding runs Schemology (formerly known as Redink Planning), a town-planning consultancy based in north-east Victoria focussing on project management, strategic planning, drafting of planning scheme controls and training planners.

Read Cazz's full bio on Page 9.

#### Date

Tuesday, 24 March 2026  
OR  
Wednesday, 6 May 2026  
OR  
Monday, 22 June 2026

Depending on demand, more courses will be added throughout the year.

#### Time

9.30am - 5:00pm

#### Delivery

Online - Hosted from VIC

#### Price

PIA Members \$345  
Non-members \$570

7  
CPD  
POINTS

## CRIME PREVENTION THROUGH ENVIRONMENTAL DESIGN FOR PLANNERS - USING THE NEW ISO 22341 STANDARD

This CPTED training for Planners and related professions provides a detailed overview of the use of the international CPTED standard ISO22341. This is the first internationally agreed standard of CPTED best practice and replaces earlier approaches based on 'CPTED guidelines.

The new ISO standard for CPTED is grounded in evidence of what works and what doesn't in CPTED practices - much of which challenges earlier assumptions and principles - and increasing liabilities for developers around crime risk management. The ISO standard includes 3 formal CPTED processes (for planning, design and management of the built environment); 10 CPTED methods (replacing the previous 5 CPTED principles); a focus on crime risk rather than potential vulnerabilities; and to ensure CPTED ROI is positive.

### DESIGNED FOR

Town planners, urban designers, planning lawyers, strategic planners, architects development managers and infrastructure management

### LEARNING OUTCOMES

- Gain an overview of the new international CPTED standard ISO 22341 and why it is so significant for planners, architects, strategic planners, lawyers and those managing the built environment;
- Gain information about the insights from evidence that have significantly changed fundamental assumptions in CPTED and CPTED theory and build an understanding of the three standard CPTED processes;
- Understand the 10 CPTED social and physical methods;
- Understand the roles of socio-demographic data and crime risk in CPTED interventions; and
- Learn how best to undertake and document design of CPTED interventions.

### COMPETENCY PRACTICE AREA

Developing and applying technical knowledge

### COURSE PRESENTER

**Dr. Terence Love** is qualified to the highest CPTED international standards (ICA, NSW Police, WA Police, PhD UWA), CPTED reviews of around \$13 billion of development applications, 25 years of CPTED research with some of our research documents amongst the most highly cited in the field, CPTED training and certification for several hundred planning and built environment professionals and police, consultants for Federal, State and Local Government crime prevention practices and guidelines, reviewers of the ISO 22341 CPTED standards, certified by the International CPTED Association to offer CPTED training to the highest levels (Class A) for those wishing to achieve international certification. Developers of the most advanced CPTED training.

**Date**  
Wednesday, 1 April 2026

**NATIONAL**

**Time**  
9.30am - 5:00pm

**Delivery**  
Online - Hosted from VIC

**Price**  
PIA Members \$345  
Non-members \$570

**7  
CPD  
POINTS**

## A-Z OF THE DEVELOPMENT PROCESS

**NEW**

The development process begins well before any planning permit application, and goes on long beyond approval of a planning permit. This course examines the whole process, from finding a suitable project, funding considerations, feasibility for various design scenarios, opportunities and constraints across all aspects of planning controls, through the planning permit process, and on to meeting each and every permit condition. All development projects are in jeopardy until all conditions are met and Statement of Compliance is issued. What are the drivers for proponents, what is their appetite for compromise, can Council assist with creating viability and how much weight should the project expect from consultation outcomes? Development is usually fraught with stress points and unforeseen hurdles. This course will provide participants with insight into urban and regional development process from paddock to plate.

### DESIGNED FOR

Town planners who know and use the planning scheme, but would like to develop deeper awareness of the overall development process and improve understanding between proponents and decision makers.

### LEARNING OUTCOMES

- Gain a grounded understanding of the development process from inception to completion
- Understand Pre-permit application, the application process, and post-permit activity
- Understand the opportunities and constraints for project design considerations
- Recognise the differences between urban and regional considerations
- Develop awareness of the practical impact of decision makers on project viability

## COMPETENCY PRACTICE AREA

Understanding and working with planning frameworks.

### COURSE PRESENTER

#### Andrea Tomkinson, Managing Director, Tomkinson

Andrea is a housing and development specialist with a deep affection for regional living, working and character, and a firm belief in the strength and adaptability of individual towns and their local people.

For more than 50 years Tomkinson has been playing a key role in the consultation, management and delivery of land use change projects across government, not for profit and private stakeholders. Projects have ranged from strategic analysis, planning scheme amendments, large scale urban design and subdivision, commercial, industrial and residential development through regional Victoria and peri-urban Melbourne. With experience living and working in a wide range of distinct locations, across government and private sectors, Andrea has built up a wealth of knowledge and brings a consistently broad perspective to Tomkinson projects. She engages in all aspects of planning, subdivision, civil engineering and project management across the Tomkinson management team.

**Date**  
Wednesday, 15 April 2026

**Time**  
9:30 AM - 5:00 PM

**Delivery**  
In Person - Planning Panels Victoria

**Price**  
PIA Members \$345  
Non-members \$570

**7  
CPD  
POINTS**

## AI IN TOWN PLANNING AND DEVELOPMENT FOR BEGINNERS

**NEW**

Learn the basics of AI and how it can revolutionise urban planning and development.

Urban planning and development is complex, time-pressured and highly accountable. Councils, referral authorities, applicants, consultants and developers all have a lot to gain if AI is applied in the right places – with the right safeguards.

This course explains AI in plain language and focuses on what matters most for planning and development: trust, accuracy, evidence, security, and practical ROI.

## PLANNING SYSTEM

We'll cut through hype, show where AI genuinely helps (and where it doesn't), and outline what "good implementation" looks like in a real-world planning environment.

No technical background in AI or technology required.

### DESIGNED FOR

Designed for people working in, or adjacent to, the planning and development system:

- Local government (planners, coordinators, managers, executives)
- Referral authorities and infrastructure agencies
- Consultants (planning, urban design, transport, engineering)
- Developers, applicants, project managers
- Innovation/transformation leads supporting planning functions

### LEARNING OUTCOMES

- A clear understanding of core AI concepts, the main risks (accuracy + data), and how to think about AI responsibly in planning practice.
- What to automate vs what must stay with planners (human-in-the-lead). Responsible use in practice: accuracy checks, prompts, and documentation  
Preparing your organisation: people, process and systems (what to do next) Measuring ROI: what to track (time saved, rework reduced, risk reduced, consistency.)

### COMPETENCY PRACTICE AREA

Understanding and working with planning frameworks

### COURSE PRESENTERS

#### James Mant MPIA

*Founder, StreetCo – Urban Planning | Walkable Urbanism | Committee Member PIA (Vic) | Editor PIA Planning News | Podcast Host – City People*

Former Director of Places & Precincts (Vic), James is a town planner that led the award-winning 20-Minute Neighbourhoods policy and Future Homes program. He is a national leader in planning innovation and advocates a new renaissance in planning using AI and automation.

#### Jennifer George

*MBA, GAICD (Finalist – Women in Digital: Leader in AI) | CEO of Strategic Commercialisation Australia | Member MAV, AI Taskforce*

Jennifer is a recognised leader in AI, innovation, and digital transformation. Passionate about building organisations that respond to climate change and societal challenges, she has successfully guided the commercialisation of deep-tech and AI innovations across more than 50 industries. Her work focuses on helping government and industry adopt technology safely, ethically, and with purpose, ensuring that digital innovation strengthens trust, transparency, and outcomes for communities.

PIA PLANET 2026 COURSE GUIDE | VIC & TAS

#### Date

Thursday, 16 April 2026

#### Time

9:30 AM - 5:00 PM

#### Delivery

Online - Hosted from VIC

#### Price

PIA Members \$345  
Non-members \$570

7  
CPD  
POINTS

## MEGA (TRANSPORT) PROJECTS – THE INSIDE STORY

NEW

More than ever, Australia's cities are being shaped by large-scale infrastructure and urban renewal projects—often announced as bold election commitments and delivered under tight political and commercial constraints. While such mega-projects have profound and lasting impacts on urban form, land use, and communities, the planning processes that underpin them are typically obscured from public view, frequently shielded by claims of commercial-in-confidence.

This course is designed to unpack how planning operates within major project delivery frameworks, with a particular focus on public-private partnerships. It examines the institutional settings, governance arrangements, and decision-making processes that influence planning outcomes, as well as the roles played by government, private sector proponents, and statutory authorities.

Participants will explore different project delivery models, the nature and limits of planning within those models, and how planning disputes are managed and resolved. The course also considers when, where, and how planners and other stakeholders can meaningfully intervene to influence outcomes.

The recently completed Melbourne Metro project will be used as a case study to ground discussion in contemporary practice.

### DESIGNED FOR

Anyone who interacts with mega-projects, including state and local government officers and consultants.

## LEARNING OUTCOMES

- Explain the key characteristics of major project delivery models, including public-private partnerships, and their implications for planning practice.
- Identify how statutory planning processes operate within large-scale infrastructure and urban renewal projects, including where normal planning controls are modified or displaced.
- Analyse the governance, institutional, and commercial factors that shape planning decisions in mega-project contexts.
- Evaluate how planning disputes arise in major projects and the mechanisms through which they are negotiated, resolved, or adjudicated.
- Recognise critical points in the project lifecycle where planners and other stakeholders can exert influence.
- Apply lessons from the Melbourne Metro case study to contemporary and future major projects in professional practice.

## COMPETENCY PRACTICE AREA

Understanding and working with planning frameworks.

## COURSE PRESENTER

**Dr Eric Keys MPIA** has recently retired after a 40-year career. He is a transport professional who has worked on major transport projects around Australia and internationally. He was the inaugural Project Director for the Melbourne Metro project, and his PhD thesis is an auto-ethnography account of planning within PPP. He continues to practice pro bono and uses his spare time advocating for better planning.

### Date

Tuesday, 21 April 2026

### Time

9:30 AM - 5:00 PM

### Delivery

Online - Hosted from VIC

### Price

PIA Members \$345  
Non-members \$570

7  
CPD  
POINTS

## PRESENTING TO A PLANNING PANEL

Planning panels play a critical role in undertaking independent assessment of planning proposals in Victoria. Planning panels and advisory committees assess planning proposals, such as planning scheme amendments, major projects and environment effects statements, by considering submissions, conducting hearings and giving expert advice to the planning authority (generally Council's or the Minister for Planning).

This course introduces Planning Panels Victoria and explains how planning panels and advisory committees work. Participants will be prepared for presenting at panel hearings including understanding the role of other parties and making more effective submissions. The course is designed for participants with some knowledge but limited experience with planning panels.

## DESIGNED FOR

Town planners particularly Council and private sector planners, including non-legal planning advocates or potential experts, who want to understand how planning panels work and be ready to start presenting at panel hearings.

## LEARNING OUTCOMES

- Understand the role of the panel or advisory committee, the and the principles of natural justice underpinning panel proceedings
- Learn how to participate effectively a panel or advisory committee process
- Understand the different stages of a panel or advisory committee process, including directions hearing and hearing, and the role of various parties
- Learn how to prepare and present a clear and constructive submission.

## COMPETENCY PRACTICE AREA

Developing and applying technical knowledge

## COURSE PRESENTERS

**Lisa Kendal MPIA (Fellow)** is an experienced environment and planning professional. Lisa was appointed as a Senior Panel Member in 2020 and was previously a sessional member of Planning Panels Victoria from 2015 – 2017. She has over 25 years' experience across local and State government, private practice.

**Tim Hellsten RPIA (Fellow)** has over 35 years' experience in statutory and strategic planning in local government and private industry predominantly within regional Victoria. Tim has been a Senior Panel member since August 2018.

## PLANNING SYSTEM

### Date

Tuesday, 28 April 2026

### Time

9:30 AM - 5:00 PM

### Delivery

In Person - Planning Panels Victoria

### Price

PIA Members \$345  
Non-members \$570

7  
CPD  
POINTS

- Learn the different 'elements' of planning schemes and when to use them.
- Learn good drafting practice, and where to find drafting advice to assist with developing your own provisions.

### COURSE PRESENTER

#### Cazz Redding MPIA (Fellow), Director, Schemology

Cazz Redding runs Schemology (formerly known as Redink Planning), a town-planning consultancy based in north-east Victoria focussing on project management, strategic planning, drafting of planning scheme controls and training planners.

Read Cazz's full bio on Page 9.

## LOCAL POLICY AND SCHEDULES IN PLANNING SCHEMES

NEW

This course provides an overview of elements of the Victoria Planning Provisions and how to use them to construct a planning scheme. It explores the different elements of the Victoria Planning Provisions in some detail, and how they should be used, providing participants with strategies and techniques to help select the best tools to use in their local planning scheme. It includes advice and strategies about how to use parent provisions to determine what can be included in local policy including schedules to zones, overlays and provisions, and drafting local PPF policy and the MPS.

It is set in the context of the Planning and Environment Act, published advice from DTP, VCAT decisions and Planning Panel recommendations.

### DESIGNED FOR

- Strategic planners
- Statutory planners
- Junior lawyers

### LEARNING OUTCOMES

- Understand the structure and content of the Victoria Planning Provisions.
- Understand how to construct a planning scheme drawing from the Victoria Planning Provisions and applying appropriate local content.
- Understand how various provisions in planning schemes link together to create a complete control.
- Understand the role and function of different sorts of local provisions (policy, zone schedules etc), and how to determine which tool to select to achieve policy outcomes.

### Date

Thursday, 14 May 2026

### Time

9:30 AM - 5:00 PM

### Delivery

Online - Hosted from VIC

### Price

PIA Members \$345  
Non-members \$570

7  
CPD  
POINTS

## SUBDIVISION FOR PLANNERS

NEW

Who wants to subdivide, why, where, how did they come up with that plan!?

A planning permit is required for all subdivision, and there are varying pathways to get there through the planning scheme. All planners, private and government, need an understanding of subdivision and the consequential complexities that may arise through the permit application process. This course will develop your ability to sift through natural constraints and opportunities, eg. topography, vegetation, existing improvements, bushfire and flood risk, archaeological factors, flora and fauna that will influence subdivision design, and will lead to improved understanding of design elements and trends, roads hierarchy, traffic flow, stormwater retention, Public Open Space etc. New provisions around subdivision have recently entered the Victorian Planning Scheme and the course will take participants through practical examples to demonstrate application of planning policy, with additional reference to the Subdivision Act and related potential permit conditions.

## DESIGNED FOR

Town planners who are likely to assess or prepare subdivision planning permit applications.

## LEARNING OUTCOMES

- Capacity to take a holistic approach to subdivision feasibility eg. financial viability, road hierarchy, sewer and water design, solar access, treatment of special site problems, access for services, road design, lot layout, staged development and treatment of drainage/sewerage, and apply balanced judgement across a range of deciding factors
- Ability to recognise and consider natural constraints and opportunities, eg. topography, vegetation, existing improvements, wetlands, geological factors, archaeological factors, flora and fauna that will influence subdivision design
- Ability to recognise and report on built constraints and opportunities, eg. buildings, dams, drainage lines, roads, utility services, land title boundaries and related features
- Improved understanding of design elements and trends, roads hierarchy, traffic flow, stormwater retention, Public Open Space as applied to subdivision.
- Understanding of subdivision pathways through the planning scheme

## COMPETENCY PRACTICE AREA

Understanding and working with planning frameworks.

## COURSE PRESENTER

### Andrea Tomkinson, Managing Director, Tomkinson

Andrea is a housing and development specialist with a deep affection for regional living, working and character, and a firm belief in the strength and adaptability of individual towns and their local people.

Read Andrea's full bio on Page 11.

### Date

Wednesday, 20 May 2026

### Time

9:30 AM - 5:00 PM

### Delivery

Online - Hosted from VIC

### Price

PIA Members \$345  
Non-members \$570

7  
CPD  
POINTS

## PUBLIC TRANSPORT PLANNING

NEW

Public transport planning has never been more important as cities seek to adapt to the challenges of climate change, congestion, and rapid population growth. Despite decades of policy intent to shift travel away from private cars, Australian cities remain highly car-dependent. This persistent gap between policy ambition and on-the-ground outcomes highlights the need for a stronger understanding of the principles that underpin effective public transport systems.

This course provides an introduction to public transport planning for practitioners, focusing on the theoretical and practical foundations that shape network performance and user experience. It introduces key concepts including generalised travel time, network connectivity and coverage, service frequency, and the relationship between land use and transport. The course also examines the economics of public transport, including funding, fare structures, and operating models, and considers how operational decisions influence planning outcomes.

The course is intended to equip planners with a practical framework for understanding public transport systems and for engaging more confidently with transport policy, service planning, and project development in professional practice.

## DESIGNED FOR

Town planners, strategic planners, traffic engineers – anyone with an interest in learning more about the workings of public transport

## LEARNING OUTCOMES

- Explain the role of public transport in supporting sustainable, accessible, and less car-dependent cities.
- Describe the core principles of public transport planning, including generalised travel time, service frequency, coverage, and network effects.
- Interpret how network design and service planning decisions influence passenger experience and system performance.
- Understand the basic economics of public transport, including funding models, fare structures, and operating costs.
- Assess the relationship between land use patterns and public transport viability and performance.
- Apply foundational public transport planning concepts to policy development, strategic planning, and project assessment in professional practice.

## COMPETENCY PRACTICE AREA

Developing and applying technical knowledge

## PLANNING SYSTEM

### COURSE PRESENTER

**Dr Eric Keys MPIA** holds a Master's of Transport Planning and a PhD in Planning. Throughout his 40-year career, he has focused on promoting and improving public transport outcomes. His work has included strategic planning, project design and delivery, operational and service reform and special event transportation. He has worked on most modes of public transport, including trains, trams, buses and ferries.

#### Date

Wednesday, 22 July 2026

#### Time

9:30 AM - 5:00 PM

#### Delivery

Online - Hosted from VIC

#### Price

PIA Members \$345  
Non-members \$570

7  
CPD  
POINTS

### LEARNING OUTCOMES

- Understand the structure and content of the Victoria Planning Provisions.
- Understand how to construct a planning scheme drawing from the Victoria Planning Provisions and applying appropriate local content.
- Understand how various provisions in planning schemes link together to create a complete control.
- Understand the role and function of different sorts of local provisions (policy, zone schedules etc), and how to determine which tool to select to achieve policy outcomes.
- Learn the different 'elements' of planning schemes and when to use them.
- Learn good drafting practice, and where to find drafting advice to assist with developing your own provisions.

### COURSE PRESENTER

**Cazz Redding MPIA (Fellow), Director, Schemology**  
Cazz Redding runs Schemology (formerly known as Redink Planning), a town-planning consultancy based in north-east Victoria focussing on project management, strategic planning, drafting of planning scheme controls and training planners.

Read Cazz's full bio on Page 9.

## TIPS AND TRICKS FOR DRAFTING OVERLAY SCHEDULES

NEW

This course provides an overview of elements of the Victoria Planning Provisions and how to use them to construct a planning scheme. It explores the different elements of the Victoria Planning Provisions in some detail, and how they should be used, providing participants with strategies and techniques to help select the best tools to use in their local planning scheme. It includes advice and strategies about how to use parent provisions to determine what can be included in local policy including schedules to zones, overlays and provisions, and drafting local PPF policy and the MPS.

It is set in the context of the Planning and Environment Act, published advice from DTP, VCAT decisions and Planning Panel recommendations.

### DESIGNED FOR

- Strategic planners
- Statutory planners
- Junior lawyers

#### Date

Thursday, 23 July 2026

#### Time

9:30 AM - 5:00 PM

#### Delivery

Online - Hosted from VIC

#### Price

PIA Members \$345  
Non-members \$570

7  
CPD  
POINTS

## APPLICATION ASSESSMENTS

ENVIRONMENTAL IMPACT  
ASSESSMENT (EIA)

This course provides an overview of the Environmental Impact Assessment (EIA) process in Victoria and explains how the assessment interacts with other statutory decisions. It includes an introduction to EIA principles, State and Commonwealth legislation, referral requirements, scoping, assessment and advisory committees, bilateral agreements and the links between EIA and planning decisions. Case studies and practical examples will be used to illustrate the EIA principles and application of the legislative framework.

## DESIGNED FOR

Statutory and strategic planners, environmental consultants, engineers. Planners who work on medium-larger scale projects in locations where there is more likelihood of environmental effects, or people who have no knowledge of EIA and want to build their knowledge, such as: town planners, urban designers, planning lawyers, strategic planners etc.

## LEARNING OUTCOMES

- Gain an understanding of EIA principles and Legislative frameworks (State and Commonwealth)
- Understand when a referral is likely to be required under the Environment Effects Act 1978 (EE Act) and/or Environment Protection and Biodiversity Conservation 1999 (EPBC Act)
- Learn the steps in the EIA process (referral, scoping, exhibition, advisory committee, assessment and statutory decisions)
- Gain an overview of strategic environmental assessment (SEA) (e.g. such as the Melbourne Strategic Assessment or MSA)
- Understand how EIA informs other decision-makers about the likely environmental effects of a project and links to the planning system

## COMPETENCY PRACTICE AREA

Developing and applying technical knowledge

## COURSE PRESENTER

**Gabby McMillan MPIA** is an experienced environmental and planning consultant. Prior to establishing her own business, Terralogic, Gabby worked as a planning and environmental lawyer and provided advice to clients in relation to assessment process and acted as an advocate at VCAT and Planning Panels Victoria. Gabby worked as a statutory and strategic planner for 14 years. She provided statutory and strategic level bushfire planning advice at the CFA, and has administered assessment and approvals processes for State significant projects, including road, rail, power, renewable energy and mining projects.

## Date

Tuesday, 31 March 2026

## Time

9:30 AM - 5:00 PM

## Delivery

Online - Hosted from VIC

## Price

PIA Members \$345

Non-members \$570

7  
CPD  
POINTS

PLANNING PERMIT ASSESSMENT: AN  
INTRODUCTION

NEW

This is an introduction to processing and assessing planning permits for those new to statutory planning roles in the Victorian planning system. It is targeted at those new to undertaking planning permit assessment including those completing studies, fresh out of university, or coming from another jurisdiction. It is also suitable for those who will work closely with council planners who wish to understand the process from their perspective, such as those new to consultant planner roles.

It covers the steps in the process of managing a planning application and making planning decisions, including:

- Key potential mistakes and risks (and how to avoid them)
- The role of public notice and objections
- Non-statutory aspects of the process (including negotiation and mediation)
- Making good decisions and getting good outcomes

## DESIGNED FOR

Urban planners (statutory planners)

## LEARNING OUTCOMES

- Understanding of the Victorian processes for processing and assessing planning permits

## COMPETENCY PRACTICE AREA

Understanding and working with planning frameworks

## COURSE PRESENTER

**Stephen Rowley MPIA (Fellow)** is a planner with more than 25 years of experience at state and local government, including 15 years as a statutory planner at local government.

## APPLICATION ASSESSMENTS

He is the author of *The Victorian Planning System: Practice, Problems and Prospects*, the standard introductory text about the Victorian planning system. He is an experienced planning educator, having taught planning at RMIT and Monash Universities. Stephen runs his own planning consultancy, RCI Planning, focussing on providing training and expert witness services. He also works part time at SGS Economics and Planning, where he is a Senior Associate.

### Date

Tuesday, 14 April 2026

### Time

9:30 AM - 5:00 PM

### Venue

Online - Hosted from VIC

### Price

PIA Members \$345  
Non-members \$570

7  
CPD  
POINTS

## PARKING REQUIREMENTS, OVERLAYS & WAIVERS

Recent changes to the VPP parking provisions are one of the most significant changes affecting every Planning Permit Application and Scheme Amendment in recent times. Ensuring you and your team understand how they should be applied in concert with best practice parking management techniques is key to creating the most efficient, productive, resilient and sustainable communities.

The new controls create greater complexity and flexibility with respect to parking. Applied well they will save businesses and residents money, and make our towns and cities more efficient.

The VPP parking provisions are one of the most contentious aspects of the planning system. Parking is often a key feature of objections and the application of parking controls takes up significant officer time and Council resources.

Parking management practices have a direct impact on local economic activity. Providing parking can often be the most expensive part of starting a new business and these costs are passed through to local customers. New buildings should last 30-50 years at a minimum. Parking requirements and permit conditions need to be relevant over that period of time.

Ensuring your local planning team apply best practices when using the parking provisions is critical to achieving your local planning objectives.

This course explores all aspects of the parking provisions including:

- Origins of the parking provisions and revised Clause 52.06
- Fundamentals of travel behaviour and parking management
- Creating new Parking Overlays
- Applying controls through the permit process
- Calculating requirements and appropriate waivers
- Impacts of technology on future needs
- Relevant VCAT cases.

The course will equip you to confidently use your professional judgement with regard to parking provisions. It will streamline your planning permit processes and increase local economic activity in the areas you want to see thrive.

### DESIGNED FOR

The course is designed for all those involved in discussions about how much parking is enough and how it should be designed. This includes:

- Strategic planners
- Statutory planners
- Councillors
- Environmental Lawyers
- Urban designers
- Urban economists

### LEARNING OUTCOMES

- Understand the origins of parking requirements (including the market failure case)
- Gain a broad understanding of travel behaviours and parking management techniques
- Understand the changes to Clause 52.06 and how the new categories should be applied
- Understand how to create a new parking overlay including data requirements and appropriate cash in lieu payments
- Learn how to apply parking controls through the planning permit process including calculation of appropriate requirements and waivers
- Understand the likely impacts of technology on future parking requirements and how this should inform decisions being made today
- Gain awareness of relevant red-dot VCAT cases

### COMPETENCY PRACTICE AREA

Understanding and working with planning frameworks

## COURSE PRESENTER

**Knowles Tivendale MPIA** is the Managing Director of Movement & Place Consulting (M&PC), and has over 25 years experience in urban planning and transport planning. He has completed the transport components for over 25 Activity Centre Structure Plans and has written numerous parking strategies including the current Melbourne CBD and Docklands Parking Strategy, Moorabool Parking Study and a review of Cash in Lieu provisions of the Casey Planning Scheme. Knowles has presented at VCAT and Planning Panels Victoria and is focussed on achieving more efficient, productive, sustainable and resilient outcomes with regard to transport and land use.

### Date

Wednesday, 22 April 2026

### Time

9.30 AM - 5:00 PM

### Delivery

Online - Hosted from VIC

### Price

PIA Members \$345  
Non-members \$570

7  
CPD  
POINTS

## USING THE RESIDENTIAL DEVELOPMENT PROVISIONS

NEW

This course provides an introduction to the residential development provisions in the Victorian planning systems.

The Victoria planning framework is the result of layering of reforms, including the “ResCode” provisions of the early 2000s, residential zone reforms from the 2010s, and a wave of facilitative reforms following the Victorian housing statement in 2023. The different approaches reflected evolving expectations regarding housing outcomes, and starkly contrasting approaches to issues such as neighbourhood character and public participation. These waves of change have resulted in a complex layering of controls.

This course seeks to demystify and explain the residential provisions.

It explores how to make decisions in this framework, including:

- The shifting (and narrowing) scope for consideration of character, context, local policy, and objector concerns.
- The role of deemed-to-comply controls and VicSmart streams.
- How to use Objectives, Standards, and other aspects of the provisions.
- Key challenges and issues for medium density housing assessments.
- The proliferation of special assessment streams.
- Ongoing reforms (including planning controls around activity centres and mooted new controls for mid-rise housing).

The course is aimed particularly at decision-makers such as council statutory planners but is suitable for anyone who wishes to better understand how the provisions work. It is intended for those new to the Victorian system but is also suitable for those looking to refresh their understanding of a shifting landscape.

## DESIGNED FOR

Urban planners (statutory planners) and others who need to work closely with the residential provisions.

## LEARNING OUTCOMES

- Understanding of the Victorian residential development provisions.

## COMPETENCY PRACTICE AREA

Understanding and working with planning frameworks

## COURSE PRESENTER

**Stephen Rowley MPIA (Fellow)** is a planner with more than 25 years of experience at state and local government, including 15 years as a statutory planner at local government.

Read Stephen's full bio on Page 17-18.

### Date

Tuesday, 5 May 2026

### Time

9.30 AM - 5:00 PM

### Delivery

Online - Hosted from VIC

### Price

PIA Members \$345  
Non-members \$570

7  
CPD  
POINTS

## APPLICATION ASSESSMENTS

## NAVIGATING MAJOR INFRASTRUCTURE APPROVALS: EES, SECONDARY APPROVALS AND COMPLIANCE IN PRACTICE

NEW

This course provides planners with a practical, end-to-end understanding of relevant legislative frameworks and the approvals for major infrastructure projects in Victoria. It will provide practical understanding of the EES process required for major infrastructure projects, related secondary approvals, with consideration of stakeholder engagement, compliance management, and auditing. Drawing on real-world examples, this course equips planners with practical tools to navigate complexity, manage risk, and support the delivery of major infrastructure projects.

This course will detail:

- the Environment Effects Statement (EES) process, where the session explains when and how EESs are triggered, how they interact with the planning system, and the role they play in shaping project outcomes.
- the coordination of secondary and ancillary approvals, highlighting common approval pathways and the interface between statutory planning, environmental regulation, and project specification requirements. Particular emphasis is placed on stakeholder engagement, including working with government agencies, councils, communities, urban design advisory panel, and Traditional Owners to manage risk and support timely decision-making.
- the compliance and auditing across the project lifecycle, providing insights into approval conditions, environmental management frameworks, and assurance mechanisms during construction and operation.

### DESIGNED FOR

Statutory planners, urban designers, strategic planners, and community engagement advocates, approval coordinators and project managers.

### LEARNING OUTCOMES

This session provides participants with a practical understanding of the EES process required for major infrastructure projects and related secondary approvals, stakeholder engagement, compliance management, and auditing. Attendees will gain applied insights into navigating complex regulatory planning frameworks in Victoria, approval pathways, and managing risk across the project lifecycle.

### COMPETENCY PRACTICE AREA

Understanding, interpreting and using spatial thinking.

### COURSE PRESENTERS

**Kate Matthews MPIA** is a Principal Planner at Tract with over 15 years of industry experience, having previously worked in statutory and strategic planning roles at Yarra Ranges, Bayside and Whittlesea Councils.

She has worked on multiple packages of the North East Link and Suburban Rail Loop projects coordinating planning approvals for the managing contractor, including the preparation of Urban Design and Landscape Plans (UDLPs), in addition to providing inputs and assessments for post-approval design and construction compliance processes.

Kate's experience across a broad spectrum of statutory and strategic planning projects, combined with her strong project management skills and experience working with and across a broad range of technical disciplines allows her to efficiently identify and resolve planning issues and bring an integrated, pragmatic approach to planning projects

**Olivia Coghill** is the Manager of Statutory Planning at the Department of Transport and Planning, leading the provision of transport planning approval advice across 20 municipalities in western Victoria. Her experience navigates local, State and Federal legislative frameworks and coordinating complex planning, heritage and environmental approvals to support the development and delivery of major infrastructure projects. Her Environment Effects Statement experience spans rail, renewable energy and road projects across metropolitan and regional Victoria, providing her with practical insight into approval pathways for complex transport initiatives.

**Lulu Zhang** is an experienced town planner with a multidisciplinary background in architecture, urban design, and law. Her career commenced in 2009 and spans Australia and China, with deep expertise in statutory planning, environmental regulation, and major infrastructure delivery. Based in Victoria since 2012, she has led and advised on complex planning and approvals across local and state government and Tier 1 construction environments, including a multi-billion-dollar road program. She currently works as Manager, Planning and Environment at a utility services company, providing advice on regulatory risk, approvals pathways, and the delivery of energy network upgrades and renewable energy projects.

**Date**

Monday, 11 May 2026

**Time**

9.30 AM - 5:00 PM

**Delivery**

Online - Hosted from VIC

**Price**

PIA Members \$345  
Non-members \$570

7  
CPD  
POINTS

The green wedge areas of Victoria support a diverse range of land uses, including farming, residential, and commercial activities. They encompass many of the state's significant natural resources, such as native vegetation, minerals, and water catchments, while also providing key resources for recreation, tourism, and timber production. Applications within these areas are often highly complex, requiring the careful balancing of competing requirements and considerations during the decision-making process.

This course offers an in-depth exploration of assessment processes and key considerations within Green Wedge Zones.

Participants will have the opportunity to enhance their knowledge, build confidence in decision-making, and engage in practical exercises and facilitated discussions. The course also provides insights into the broader context of legislative frameworks, practice notes, and relevant VCAT decisions, equipping participants with the tools to make informed and balanced decisions.

## PREPARING & ASSESSING A BUSHFIRE MANAGEMENT STATEMENT

The planning system has an important role in creating communities that are resilient to bushfire. Learn about the key bushfire policies and statutory controls in Victoria. Learn when and how State bushfire policy at clause 13.02-1S influences statutory planning decisions. Learn about the Bushfire Management Overlay and how to prepare and assess a bushfire management statement that addresses Clause 44.06 and 53.02. Learn about the vegetation removal exemptions that apply in the Bushfire Management Overlay and designated Bushfire Prone Areas.

The course is interactive and you will learn the basics of fire behaviour, to enable you to make more informed planning decisions. You will work through case studies to learn how to apply the bushfire policy and controls when making statutory planning decisions.

### DESIGNED FOR

Local government statutory planners, referral authorities and planning consultants who would like to better understand the role of the planning scheme in managing bushfire risk.

### LEARNING OUTCOMES

- Better understand how the planning scheme contributes to strengthening community resilience to bushfire
- Understand the information required to assess bushfire risk for a planning proposal and what planning proposals need to respond to bushfire.
- Learn to identify the key elements to prepare a Bushfire Management Statement, including the site assessment used to determine defensible space and construction levels.

### COMPETENCY PRACTICE AREA

Developing and applying technical knowledge.

### COURSE PRESENTER

**Andrew Ganey MPIA** is the principal consultant at Planning For Fire and has worked in the bushfire, planning and fire prevention sectors for well over a decade. This includes firefighting experience, work for local government, and for industry bodies, and at both the Country Fire Authority (CFA) & Fire Rescue Victoria (FRV).

**Date**

Thursday, 4 June 2026

**Time**

9.30 AM - 5:00 PM

**Delivery**

Online - Hosted from VIC

**Price**

PIA Members \$345  
Non-members \$570

7  
CPD  
POINTS

## APPLICATION ASSESSMENTS

### LANDSCAPE & VISUAL IMPACT ASSESSMENT

This course provides an overview of contemporary approaches to landscape and visual impact assessment, and an understanding of why these methods are essential in modern planning practice.

To achieve this, the course will review the philosophy, history and context underpinning landscape and aesthetic appraisal. We will also explore the differences between Australian (state-based) and international guidance.

Participants will compare different types of landscape and visual reports, enabling practitioners to effectively scope and review assessments. Through case studies and a practical workshop, we will apply assessment guidelines in real world scenarios.

A key element of the course is developing a critical perspective on current approaches to landscape and visual impact assessment, including its future development and role in planning. Participants will gain an understanding of the importance of landscape and visual considerations within the planning context, and how planning practitioners can better utilise these assessments in their work.

#### DESIGNED FOR

Local government and consultant planners responsible for scoping, preparing or assessing applications and seeking clarity on landscape and visual impact assessment.

This course is also suitable for urban designers, developers, solicitors and others involved in design, impact assessment or planning-related decision-making.

#### LEARNING OUTCOMES

Participants will be able to:

- Describe the nature of landscape and visual impact assessment, including its philosophy, history and planning context.
- Summarise the differences between Australian and international guidance for landscape and visual impact assessment.
- Compare different types of landscape and visual impact assessment reports.
- Scope and review landscape and visual impact assessments effectively.
- Evaluate the influence of VCAT decisions on landscape and visual impact assessment practice.
- Contrast case studies demonstrating the application of landscape and visual impact assessment in industry.
- Apply landscape and visual impact assessment guidelines in real-world settings.

- Critique current Australian guidance for landscape and visual impact assessment.
- Evaluate when and how landscape and visual considerations should be applied within the planning context.

#### COMPETENCY PRACTICE AREA

Understanding and working with planning frameworks

#### COURSE PRESENTER

**Laura Farrell** is a Technical Director in Landscape Planning with 20 years of international experience in Landscape and Visual Impact Assessment (LVIA). Laura's career spans major infrastructure and development sectors, including transmission networks, renewable energy projects, highways, mining and large-scale commercial developments. She is recognised for her ability to translate complex landscape and visual constraints into clear, defensible assessments that support robust planning outcomes.

Laura has a strong foundation in spatial analysis and evidence-based assessment. She holds a Master's degree in Spatial Information Management and an Honours degree in Landscape Architecture. Her postgraduate research focused on the use of spatial datasets to generate Zones of Theoretical Visibility, contributing to a deeper understanding of how digital modelling can inform LVIA processes.

Across her work, Laura is committed to advancing best practice in landscape and visual assessment in Australia. She brings a critical and forward-looking perspective to the evolution of LVIA guidance and its integration into planning systems.

#### Date

Thursday, 18 June 2026

#### Time

9.30 AM - 5:00 PM

#### Delivery

Online - Hosted from VIC

#### Price

PIA Members \$345

Non-members \$570

7  
CPD  
POINTS

## STATEWIDE STORMWATER PROVISIONS IN THE PLANNING SCHEME

The Victorian Government expanded State-wide stormwater planning controls in October 2018 to help protect our waterways, prevent flooding and divert more rainfall to our gardens and trees rather than letting it disappear down the drain. This is known as ‘integrated water catchment management planning’, and for some it is known as Amendment VC154. Almost every new planning application will now need to treat stormwater on site. This course is designed to help planners understand the integrated links between water and cities, understand the role and scope of the new State controls, and to help planners understand how to receive and assess applications in a way that best achieves our new stormwater objectives.

### DESIGNED FOR

This course is suitable for senior and junior staff as each has a different role to play in implementing Victoria’s progressive new stormwater controls. The course particularly welcomes practitioners that want to become better urban and environmental planners by deepening their stormwater knowledge.

### LEARNING OUTCOMES

- Understand the Victorian context for Statewide stormwater planning controls
- Gain a general understanding of IWCM and stormwater assets, what they look like, how they work, and spatial requirements
- Be able to interpret planning application documentation, including engineering reports, to the level required to be able to assess if planning requirements are met. This relates to the full suite of stormwater controls including cl.19.03-3S, cl. 53.18 and others
- Understand critical concepts such as ‘raingardens’, ‘bioretention systems’ and ‘treat to best practice’

### COMPETENCY PRACTICE AREA

Developing and applying technical knowledge

### COURSE PRESENTERS

#### Sara Lloyd - Director, Environmental Science - E2Designlab

Sara is a highly experienced practitioner in integrated water management, having led the development of keystone projects in the Victorian industry over the last 20 years. Sara draws on reliable science and her industry experience to tackle the complex and often competing technical, economic, environmental and social issues when delivering projects.

#### Kate Matthews MPIA - Tract Consultants

Kate is a Principal Planner at Tract Consultants, having previously worked in statutory and strategic planning roles in local and state government with a focus on greenfields and major infrastructure projects. She has spent much of her career at the “pointy end” of stormwater policy implementation through the planning system, as well as having developed a strong working knowledge of stormwater management policy, modelling and asset design through her previous roles at Melbourne Water and Cardno.

#### Mandy Bolton - Senior Policy Advisor, DEECA

Mandy Bolton is a Senior Policy Advisor within the Department of Energy, Environment and Climate Action (DEECA) working on urban water programs to support the Government’s objectives for resilient and liveable cities and towns under Water for Victoria. DEECA aims to improve stormwater management and strengthen the links between water management and urban planning; alongside population growth and urban development, to protect the long-term health of urban waterways and bays.

#### Date

Thursday, 27 August 2026

#### Time

9.30 AM - 5:00 PM

#### Delivery

Online - Hosted from VIC

#### Price

PIA Members \$345  
Non-members \$570

7  
CPD  
POINTS

## PLANNING LAW

## UNDERSTANDING DEVELOPMENT CONTRIBUTIONS

NEW

Development contributions are a key part of the Victorian planning system, facilitating the timely delivery of infrastructure. This half-day session will unpack the operation of the Planning and Environment Act 1987 in relation to development contributions, examining how public infrastructure, works, services and facilities can be provided and funded. It will explain how development contributions plans are prepared and implemented, and how works, services, and facilities may also be secured through planning permit conditions, section 173 agreements, or works-in-kind.

## DESIGNED FOR

Statutory and strategic planners working with development contributions plan system

## LEARNING OUTCOMES

By the end of this session, attendees will be able to:

- Explain how public infrastructure, works, and services can be required or funded under the Planning and Environment Act 1987.
- Understand the policy rationale, legal basis, and operation of the Victorian development contributions system.
- Recognise common pitfalls and compliance issues that arise in implementing contribution requirements.

## COMPETENCY PRACTICE AREA

Developing and applying technical knowledge.

## COURSE PRESENTER

This course will be presented by **Planology**.

## Date

Monday, 13 April 2026

## Time

9:30 AM - 1:30 PM

## Delivery

Online - Hosted from VIC

## Price

PIA Members \$235  
Non-members \$390

3.5  
CPD  
POINTS

## ENFORCEMENT LAW FOR PLANNERS

The planning permit is an enforceable document and a detailed legal process can follow if the permit and conditions have not been complied with or the works occur without approval.

This course prepares the planner to understand and apply the enforcement process. It covers different enforcement techniques for different situations and the role of the statutory planner in assisting the enforcement officer to perform this function.

Topics include:

- Planning enforcement at VCAT
- Dealing with enforcement hearings
- The process of compliance and enforcement (includes workshop sessions)
- Enforcement under the Planning and Environment Act 1987
- Different methods of enforcement - understanding the planning legislative framework
- Collecting evidence (record of interviews), entry onto property (who can do it), seeking admissions (obtaining relevant material) and providing a standard of proof
- Court or tribunal?

## DESIGNED FOR

Planners, enforcement officers or planning assistants involved in planning enforcement and who need to understand the process.

## LEARNING OUTCOMES

- Understand the importance of drafting clear permit conditions
- Recognise the different methods of enforcement
- Confidently identify the nature of the alleged offence
- Understand rights of entry onto property
- Learn how evidence is collected and establishing the strength of the evidence
- Understand the role of enforcement at VCAT.

## COMPETENCY PRACTICE AREA

Understanding and working with planning frameworks

## COURSE PRESENTER

This course is designed and presented by a legal representative from **Maddocks**.

## Date

Tuesday, 26 May 2026

## Time

9:30 AM - 1:30 PM

## Delivery

Online - Hosted from VIC

## Price

PIA Members \$235  
Non-members \$390

3.5  
CPD  
POINTS

## FLOODING – CONSIDERING PLANNING APPLICATIONS

NEW

Development on flood affected land has become increasingly challenging for statutory planners. The intersection of hydrological modelling, climate change projections, sea level rise, and layered policy frameworks can make even small applications complex to assess. This half-day workshop will unpack the technical, policy and legal elements of flood related planning decisions. Using practical examples, it will provide a clear and usable framework for assessing permit applications in flood prone areas. Affected land has become increasingly challenging for statutory planners. This workshop unpacks the technical, policy and legal elements of flood related planning decisions. Using practical examples, it provides a clear and usable framework for assessing permit applications in flood prone areas.

### DESIGNED FOR

Statutory planners who need to assess applications on flood prone land. Officers from catchment management authorities who assess planning applications.

### LEARNING OUTCOMES

By the end of this session, attendees will be able to:

- Identify when and how flood policy applies in the planning assessment process.
- Understand and clearly explain key technical concepts such as flood levels, modelling, and hazard classifications.
- Apply relevant policy considerations, including the Victorian Floodplain Management Strategy and associated planning controls.
- Recognise how recent VCAT and Supreme Court decisions have shaped the interpretation of development proposals on flood prone land.
- Confidently communicate reasoning and decisions involving flood risk to applicants and referral authorities.

### COMPETENCY PRACTICE AREA

Developing and applying technical knowledge.

### COURSE PRESENTER

This course will be presented by **Planology**.

#### Date

Friday, 29 May 2026

#### Time

9:30 AM - 1:30 PM

#### Delivery

Online - Hosted from VIC

#### Price

PIA Members \$235  
Non-members \$390

3.5  
CPD  
POINTS

## VCAT - A SKILLS-BASED APPROACH TO ADVOCATING AT THE TRIBUNAL

The written submission is an important component of a party's case in VCAT proceedings. It is the permanent record of the party's contentions and argument. The written submission ought to be concise, accurate and, importantly, persuasive.

In this workshop, the presenter will outline the principles of good drafting and the 'golden rules' of writing for VCAT.

It will not only cover the written submission but other important documents which precede and follow a Tribunal hearing including the officer's report to Council, correspondence with applicants, permit conditions and letters to the Tribunal. If poorly drafted, these documents can negatively impact on a party's case.

### DESIGNED FOR

Planners, lawyers and consultants who would like to develop and improve their advocacy skills at the Tribunal.

### LEARNING OUTCOMES

- Learn how to structure a written submission to improve its persuasiveness and comprehension and comply with the advocate's duties to the Tribunal
- Understand how to avoid writing pitfalls that may prejudice the party's case
- Gain increased efficiency in preparing the written submissions
- Learn how to use a written submission and other written materials to supplement the oral presentation
- Learn how to draft permit conditions that are valid, understandable and enforceable.

## PLANNING LAW

### COMPETENCY PRACTICE AREA

Understanding and working with planning frameworks

### COURSE PRESENTER

This course is designed and presented by a legal representative from **Maddocks**.

#### Date

Thursday, 25 June 2026

#### Time

9:30 AM - 1:30 PM

#### Delivery

Online - Hosted from VIC

#### Price

PIA Members \$235  
Non-members \$390

3.5  
CPD  
POINTS

## EXISTING USE RIGHTS

Existing use rights are an integral component of planning law. Once someone has them, they are protected by the Planning and Environment Act 1987 and planning schemes. This session examines the nature of these rights - how they are established, what rights are protected, how they are regulated, and how they are lost.

### DESIGNED FOR

Every statutory and strategic planner requires knowledge of the principles governing these rights.

### LEARNING OUTCOMES

- Understand what is an existing use right
- Identify the establishment of existing use rights
- Understand The nature of these rights
- Learn the mechanisms councils use to regulate an existing use right
- Recognise how an existing use right is lost.

### COMPETENCY PRACTICE AREA

Understanding and working with planning frameworks

### COURSE PRESENTER

This course is designed and presented by a legal representative from **Maddocks**.

#### Date

Tuesday, 11 August 2026

#### Time

9:30 AM - 1:30 PM

#### Delivery

Online - Hosted from VIC

#### Price

PIA Members \$235  
Non-members \$390

3.5  
CPD  
POINTS

## SECTION 173 AGREEMENTS UNPACKED

NEW

This half-day session provides an in-depth, practical understanding of agreements under section 173 of the Planning and Environment Act 1987. Participants will gain a clear understanding of the legislative framework governing these agreements, when and how they should be used, and how they differ from other planning instruments.

Through real examples and case-based discussion, the session will demonstrate how to draft sound permit conditions that require a section 173 agreement, how to interpret existing agreements, and how to manage their amendment or ending. Attendees will also learn to distinguish between providing consent under an agreement and granting a permit – a distinction critical to avoiding procedural errors.

Led by lawyers from Planology with decades of legal experience, this course will turn complex statutory requirements into clear, actionable guidance that planners can apply immediately in their daily work.

### DESIGNED FOR

Statutory planners and subdivision officers, officers of referral authorities and new allied professionals entering the planning system in Victoria would benefit most from this session.

### LEARNING OUTCOMES

- By the end of this session, attendees will be able to:
- Identify the key legislative framework governing section 173 agreements.
  - Distinguish between a section 173 agreement and other legal instruments.
  - Identify the appropriate circumstances for requiring or using a section 173 agreement.

- Understand the role of section 173 agreements when considering planning applications.
- Apply practical techniques for drafting and interpreting section 173 agreements.
- Understand the different processes for ending and amending section 173 agreements.

### COMPETENCY PRACTICE AREA

Developing and applying technical knowledge.

### COURSE PRESENTER

This course will be presented by **Planology**.

#### Date

Tuesday, 18 August 2026

#### Time

9:30 AM - 1:30 PM

#### Delivery

Online - Hosted from VIC

#### Price

PIA Members \$235  
Non-members \$390

**3.5  
CPD  
POINTS**

## PLANNING LAW FOR PLANNERS

This course explores the basic legal framework of planning in Victoria. It will identify and analyse the legal knowledge required for planning in Victoria, including:

- the Victorian Planning Provisions and the planning scheme amendment process;
- applying for a permit;
- considering a permit application;
- reviewing or appealing a decision or seeking a declaration; and
- Ministerial call in powers.

### DESIGNED FOR

Town planners, urban designers, planning lawyers, strategic planners and other professionals starting out in planning.

### LEARNING OUTCOMES

- An appreciation for the interrelationships within the Victorian planning system.

Improved understanding of:

- difference between use and development;
- existing use rights;
- applying for a permit;
- processing a planning permit application;
- matters to be considered when making a decision on an application
- prohibitions against granting of planning permits;
- the operation of permit conditions;
- Gain knowledge of the difference between reviews/appeals and applications for declarations at VCAT
- Develop greater awareness for the legal context of the planning system in Victoria

### COMPETENCY PRACTICE AREA

Understanding and working with planning frameworks

### COURSE PRESENTER

This course is designed and presented by a legal representative from **Maddocks**.

#### Date

Tuesday, 13 October 2026

#### Time

9:30 AM - 1:30 PM

#### Delivery

Online - Hosted from VIC

#### Price

PIA Members \$235  
Non-members \$390

**3.5  
CPD  
POINTS**

## UNDERSTANDING THE VALUE OF AND PRESENTING EXPERT EVIDENCE

This course will explain the role and duties of an expert witness and the purpose of expert evidence. It provides guidance on giving and receiving instructions, matters to consider and include when preparing an expert evidence statement, cross examination and tips for dealing with difficult questions under examination.

### DESIGNED FOR

Town planners, urban designers, planning lawyers, strategic planners and allied professionals.

### LEARNING OUTCOMES

- Understand the role, purpose and duties of an expert and expert evidence

## PLANNING LAW

- Understand the procedural requirements associated with presenting expert evidence to the Victorian Civil and Administrative Appeals Tribunal and Planning Panels Victoria
- Learn how to give and receive instructions in relation to expert evidence
- Learn how to prepare an expert evidence statement and present evidence
- Learn how to lead and present evidence in chief and how to respond to cross examination including undertaking role plays

### COMPETENCY PRACTICE AREA

Understanding and working with planning frameworks

### COURSE PRESENTER

**David Vorchheimer MPIA (Fellow) – Partner, Russell Kennedy**

David is a town planner and lawyer specialising in Planning, Environment, Heritage, Building, Subdivision and Local Government law matters. David regularly appears at the Victorian Civil and Administrative Tribunal, Planning Panels and Advisory Committees on behalf of developers, objectors and State and local government clients. David advises on and coordinates land acquisition and compensation, major projects, subdivision, environmental and heritage approvals.

**Date**

Monday, 9 November 2026

**Time**

9:30 AM - 5:00 PM

**Delivery**

Online - Hosted from VIC

**Price**

PIA Members \$235  
Non-members \$390

7  
CPD  
POINTS

## STRATEGIC PLANNING

### PLANNING FOR SETTLEMENT AND HOUSING GROWTH

Planning for settlement and housing growth while managing risk is one of the fundamentals of planning for a growing population in Victoria. This course will provide an overview of the considerations that need to be made to plan for settlement (regional and rural focus) and housing (metropolitan focus), and the baseline data and research that should be done to underpin a robust settlement and / or housing strategy. It will develop practitioner skills in interpreting, consolidating and applying this data including resolving conflicting objectives for different areas in the municipality (for example, flooding risk in activity centres). The course is informed by Victorian government advice including PPN90 and 91, Planning Panel recommendations, VCAT decisions and recent Housing and Settlement Strategy approvals, and focused on supporting practitioners in developing defensible planning scheme controls to direct preferred settlement housing growth outcomes.

#### DESIGNED FOR

Strategic planners

#### LEARNING OUTCOMES

- Understand Councils obligations for settlement and housing growth planning.
- Learn a step by step process to undertaking settlement planning and housing strategies informed by Victorian Government advice on planning for housing.
- Explore ways to resolve conflicts between risks, values and accommodating growth and develop clear policy to guide decisions makers (including application of zones and overlays, and when to utilise local policy).

#### COMPETENCY PRACTICE AREA

Understanding, interpreting and using spatial thinking

#### COURSE PRESENTER

**Cazz Redding MPIA (Fellow), Director, Schemology**  
Cazz Redding runs Schemology (formerly known as Redink Planning), a town-planning consultancy based in north-east Victoria focussing on project management, strategic planning, drafting of planning scheme controls and training planners.

Read Cazz's full bio on Page 9.

#### Date

Tuesday, 7 April 2026

#### Time

9:30 AM - 5:00 PM

#### Delivery

Online - Hosted from VIC

#### Price

PIA Members \$345  
Non-members \$570

7  
CPD  
POINTS

### SOCIAL PLANNING: ITS ROLE IN THE PLANNING SYSTEM

This is a unique course led by both a social planner and a statutory planner, both of whom have experienced and have seen the challenges faced by practitioners (across various fields) in understanding the role of social planning.

The purpose of this course is to provide a base level understanding of what social planning is, its value, and how it is already integrated within planning systems and processes. The course will examine some common social planning themes such as Electronic Gaming Machines, Liquor Licencing, Health Services, and others (suggested by the participants). It will explore challenges to the involvement of social planners in these areas and consider how the existing mechanisms can be used and strengthened to achieve a holistic and evidence-based approach to policy and planning applications.

This course is for those working in social planning (including in policy development and application assessment), those that work with social planners, and others interested in the diversity of planning.

#### DESIGNED FOR

Town planners, social planners, strategic planners, community development officers.

#### LEARNING OUTCOMES

- Understand of what social planning is
- Learn where social planning is currently integrated within the planning scheme (and where the role of social planning may be challenged)
- Understand examples of how this can be strengthened and what research/evidence is required

## STRATEGIC PLANNING

- Understand the challenges that social planners and strategic/town planners may face
- Learn how to ensure a holistic approach is considered in the consideration of policy and or applications.

### COMPETENCY PRACTICE AREA

Understanding, interpreting and using spatial thinking

### COURSE PRESENTERS

#### **Jo Noesgaard, Principal and National Lead Local Government SGS Economics and Planning.**

Jo is a social and land use planner with a drive to shape communities that are accessible and equitable for all. With over 10 years of experience working in local government, Jo believes it is essential that the social, economic, natural and built environment of cities and regions considers everyone's needs in a sustainable way.

She has experience across a range of social issues and understands the importance as well as the mechanisms available to integrate social planning across the various planning domains to improve community outcomes.

#### **Stephen Rowley MPIA (Fellow), Senior Associate SGS Economics and Planning.**

Stephen is a statutory planner with 25 years of experience in state and local government and in private practice. This includes work in statutory planning, planning research, education, and planning systems design. His work has a particular focus on the translation of strategy and policy into effective regulatory tools.

He is a recognised authority on the Victorian planning system and regulatory design for effective policy implementation. He is the author of two books, including *The Victorian Planning System: Practice, Problems and Prospects* (Federation Press, 2017 and 2023), the standard introductory text to the Victorian land use planning system.

#### Date

Wednesday, 30 April 2026

#### Time

9:30 AM - 1:30 PM

#### Delivery

In Person - SGS Economics | 14/222 Exhibition St, Melbourne

#### Price

PIA Members \$235  
Non-members \$390

7  
CPD  
POINTS

## UNDERSTANDING GROWTH AREA PLANNING

NEW

Growth area planning shapes how Victoria's newest communities are designed, serviced, and delivered. This course introduces the core concepts, processes, and stakeholders involved in planning for growth areas, with a focus on making the system understandable for practitioners at all levels.

Participants will explore why growth areas exist, how they relate to Plan for Victoria and state housing targets, and who these areas are being planned for. Using real case studies, the course explains how planners assess land capability, opportunities, and constraints, and how landowners and developers contribute essential on the ground knowledge.

The session provides a clear overview of the PSP Guidelines and evolving PSP 2.0 approach, and unpacks impact assessments, progressive certainty, development contributions, and how native vegetation and other biodiversity obligations are managed in both metropolitan and regional contexts.

Participants will also learn about the key stakeholders involved in growth area planning, including the differing role of service authorities in Metropolitan and regional area, and the role of communities in strategic versus statutory planning. The course also outlines the process for preparing and implementing a Precinct Structure Plan, including Standing Advisory Committees and panel hearings.

### DESIGNED FOR

Statutory and strategic planners interested in working in growth areas

### LEARNING OUTCOMES

Participants will gain the ability to:

- Understand the strategic purpose of growth area planning and its alignment with State-level policies.
- Analyse land capability, opportunities and constraints
- Apply PSP Guidelines and understand the PSP 2.0 methodology, including progressive certainty.
- Understanding Native Vegetation and biodiversity conservation requirements within metropolitan and regional settings
- Understand and apply the Development and Infrastructure Contribution Plan regimes
- Identify key stakeholders and understand how their roles differ in regional contexts.

- Understand the PSP preparation and implementation process, including Standing Advisory Committee and panel hearings. Understand Councils obligations for settlement and housing growth planning.
- Learn a step by step process to undertaking settlement planning and housing strategies informed by Victorian Government advice on planning for housing.
- Explore ways to resolve conflicts between risks, values and accommodating growth and develop clear policy to guide decisions makers (including application of zones and overlays, and when to utilise local policy).

### COMPETENCY PRACTICE AREA

Understanding and working with planning frameworks.

### COURSE PRESENTERS

**Jason Black MPIA (Fellow)** is a highly respected Urban and Regional Planner with more than 25 years' experience spanning Government and private sectors across Victoria. As Founder and Managing Director of Insight Planning Consultants since 2007, Jason has extensive knowledge and experience in the preparation and implementation of Precinct Structure Plans and Development Contributions. A Fellow of the Planning Institute of Australia (PIA), he has also served as President and Director of PIA at both State and National levels. Renowned for his leadership in delivering major projects - particularly in growth areas - Jason is dedicated to creating connected, inclusive communities underpinned by sound planning principles.

**Monica Ceckiewicz MPIA** has over 10 years' experience in urban and regional planning across local government and private industry, with extensive statutory and strategic planning experience in growth areas across Victoria. A member of the Insight team since 2019, Monica specialises in complex development projects, planning scheme amendments, Precinct Structure Plans and related strategic frameworks, and is skilled in community engagement and stakeholder collaboration that supports high quality planning outcomes.

#### Date

Thursday, 30 April 2026

#### Time

9:30 AM - 1:30 PM

#### Delivery

Online - Hosted from VIC

#### Price

PIA Members \$235

Non-members \$390

**3.5  
CPD  
POINTS**

## COMMUNITY INFRASTRUCTURE PLANNING 101

Community infrastructure broadly refers to the spaces in which people socialize, recreate, create and celebrate culture. It is the sum of 'hard' infrastructure (buildings) and 'soft' infrastructure (support services and programs), and plays a critical role in contributing to the social, physical, and economic health of Australian communities. Stakeholders in the planning, delivery, and management of facilities face a complex set of challenges – adapting ageing networks to contemporary needs, responding to a growing and diversifying population, achieving adequate access in rural/regional areas, delivering facilities to new communities in a timely manner, and integrating this with other planning processes. This course will explore the who, what, when, where, and how of community infrastructure planning with a focus on undertaking community infrastructure needs assessments, relying on population-based provision standards and other inputs.

### DESIGNED FOR

This course will be useful for anyone involved in planning and delivering community facilities and services - strategic planners, social planners, community infrastructure planners, asset owners and managers. It is most appropriate for newcomers to community infrastructure, or those wanting a refresher on the basics.

### LEARNING OUTCOMES

The course will address 6 key questions:

- Community infrastructure - what is it and why is it important?
- Stakeholders - who provides, manages, and uses it?
- Provision standards - how much and where should community infrastructure be provided?
- Best practice trends - how do contemporary trends differ from traditional models?
- Needs assessment - how to conduct a community infrastructure needs assessment?
- Delivery pathways - what grants/funds are available and what role to DCPs/ICPs play, and what role can existing facilities play?

### COMPETENCY PRACTICE AREA

Understanding, interpreting and using spatial thinking.

### COURSE PRESENTER

**Liz Webster** is an emerging specialist in social infrastructure planning. She is highly skilled in assessing the needs of existing and future communities, and is passionate about providing meaningful advice regarding the delivery of facilities and services to address community needs.

## STRATEGIC PLANNING

Her project experience ranges from in-depth assessments of the fitness-for-purpose and utilisation of individual facilities to municipal-wide needs assessments and community infrastructure plans. Liz is an Associate at SGS Economics and Planning.

### Date

Tuesday, 19 May 2026

### Time

9.30 AM - 5:00 PM

### Venue

In Person - SGS Economics | 14/222 Exhibition St, Melbourne

### Price

PIA Members \$345  
Non-members \$570

7  
CPD  
POINTS

## MANAGING DEVELOPMENT NEAR LANDFILLS AND OTHER BUFFERS

The planning system has an important role in managing the interface between industries and sensitive uses. With urban expansion into new growth areas and infill development in established urban areas, there is increasing pressure on Councils and proponents to consider and address the risks and adverse amenity impacts of development within buffer distances and residential encroachment on industry.

Landfills, whether they are open or closed, present a range of challenges for both 'sensitive uses' and 'all buildings and structures' in terms of development within the buffer distances and the assessment of odour and land fill gas risks. Other industrial and commercial uses are subject to the threshold distances set out in Clause 53.10 and there is increasing pressure and reliance on planners to consider and manage these buffers to sensitive uses and assess how industries and other uses respond to potential off-site impacts.

This course covers the essentials needed to understand the buffer distances for landfills, the role of landfill gas risk assessments, an understanding of the different planning scheme and EPA buffer distances that apply to industry and the consideration of reverse amenity buffers.

### DESIGNED FOR

Statutory and strategic planners in local government, planning consultants, environmental consultants.

### LEARNING OUTCOMES

- Understand the regulatory framework relating to landfills and the role of landfill gas risk assessments for development near landfills
- Understand the operation of Clause 53.10 threshold distances and how they relate to EPA's Separation Distance guidelines
- Understand the role of buffers to minimise adverse amenity impacts of industry on sensitive land uses, and the concept of reverse buffers to protect existing industry from encroachment by sensitive uses
- Develop confidence in managing the issues related to landfill gas and the consideration of buffer distances in scheme amendments and planning applications

### COMPETENCY PRACTICE AREA

Developing and applying technical knowledge.

### COURSE PRESENTER

**Jean Meaklim** has a 30-year career in government, industry, public health and environmental assessment. During 12 years in the Victorian Health Department and 13 years at EPA, she developed extensive experience assessing and managing pollution and other environmental issues, including impacts on land development and planning.

**Denise Turner MPIA (Fellow)** has over 30 years' experience in Victorian town planning across state and local government. She has extensive experience in all facets of land use planning as well as a range of environmental planning issues, having worked at EPA as their Senior Planning Adviser for 7 years. Denise's planning experience spans metropolitan, growth areas and regional areas.

### Date

Thursday, 21 May 2026

### Time

9.30 AM - 5:00 PM

### Venue

Online - Hosted from VIC

### Price

PIA Members \$345  
Non-members \$570

7  
CPD  
POINTS

## AN INTRODUCTION TO PLANNING WITH COUNTRY FOR ALLIES

Everything we do as planners, designers and policy makers we do on Country. Building our allyship and understanding of the opportunities offered when we adopt a Country-centered approach to our work, enables us to step-in as non-Indigenous Australians and play a more active role in healing the past. Planning with Country provides a new lens through which to see our work in land-use planning, economic development, heritage and environmental protection, stakeholder engagement and design. As allies we can listen better, improve our governance and decision-making, seek out different knowledge sets and engage proactively with First Nations colleagues and communities. In this course we will critically reflect on the values that inform our processes and decision-making, explore the opportunities for healing and change through a Country centered approach to planning, design and policy. Participants do not need to be working on a specific project, but rather come with a willingness to challenge their own perspective and practice in a safe, non-judgmental space.

### DESIGNED FOR

Strategic planners, designers, policy makers who want to build their allyship and understanding of planning with Country

### LEARNING OUTCOMES

- A clear understanding of what planning with Country means to ally planners/designers.
- Strategies to integrate planning with Country principles in practice.
- Confidence to advocate for a Country-centered approach on current and future projects.

### COMPETENCY PRACTICE AREA

Using a creative and integrative approach, drawing on a range of disciplines.

### COURSE PRESENTER

**Michelle Howard MPIA (Fellow)** is a Fellow of the Planning Institute of Australia and an internationally accredited facilitator and strategic planner. As Managing Director of Collaborations, she has worked on planning, design and infrastructure projects across Australia for the past 30 years. Michelle is a founding member of PIA's Knowledge Circle and hosts the national Allies Community of Practice. She has a reputation for working with diverse constituencies and managing complex issues of change. Michelle is an experienced trainer and mentor within the urban planning and community engagement sectors.

Born on Palawa Country, Michelle has worked with Indigenous colleagues and friends since 1988 to integrate a stronger cultural narrative and voice in art, planning and design projects. She recognises the on-going learning, powerful questions and work required to build a 'two-way' approach.

#### Date

Wednesday, 24 June 2026

#### Time

9:30 AM - 1:30 PM

#### Venue

Online - Hosted from VIC

#### Price

PIA Members \$235  
Non-members \$390

NATIONAL

3.5  
CPD  
POINTS

## PLANNING AND DESIGN USING THE MOVEMENT AND PLACE APPROACH

This course is designed for planners, engineers and landscape architects to develop a better understanding of how the Movement & Place framework and tools can be used to solve a range of issues in main streets and activity centres across Victoria, including place making, land use planning, and movement & access.

### DESIGNED FOR

Transport engineers / planners, strategic planners, urban designers, and landscape architects

### LEARNING OUTCOMES

- Identify when to use Movement and Place
- Learn practical ways of working together in multi-disciplinary teams using a 'common language'
- Gain an overview of the '6-step' Movement and Place assessment process
- Learn how to incorporate Movement & Place into project brief development
- Learn how to use the framework to develop, assess and refine project options
- How it can be applied to a wide range of project contexts, from existing activity centres to greenfield / growth areas.

### COMPETENCY PRACTICE AREA

Using a creative and integrative approach, drawing on a range of disciplines.

## STRATEGIC PLANNING

## COURSE PRESENTERS

**Ben Krastins****Senior Associate: Transport, Ratio Consultants**

Ben is a transport engineer turned planner, who has been at the forefront of applying the Movement and Place framework in Victoria since its emergence in circa 2019.

Using insights from his time working in Local Government, Ben works closely with Councils across Victoria, bringing together stakeholders and exploring innovative (and often creative) ways of applying Movement and Place to strategic planning and design projects.

Ben regularly presents on Movement and Place at industry seminars, conferences, training courses, Councillor groups and project working groups.

**Harry Jorgensen****Senior Transport Planner, Ratio Consultants**

Harry is a transport planner who sees streets as far more than just roads designed for moving vehicles from A to B as quickly as possible.

His approach to Movement and Place adopts a human-focused lens, recognising the important role streets play in supporting social interaction, enhancing local trade, and balancing competing transport modes within constrained road environments.

Harry has extensive experience undertaking Movement and Place assessments in both urban and regional contexts and enjoys providing transport justification to support meaningful placemaking opportunities.

**Date**

Wednesday, 5 August 2026

**Time**

9:15 AM - 2:45 PM

**Venue**

In Person - 65 Dover Street, Cremorne

**Price**

PIA Members \$235  
Non-members \$390

4.5  
CPD  
POINTS

## PLANNING FOR FLOOD IN A TIME OF CHANGE

NEW

How do we plan for flood when the science behind its impacts is constantly changing? These and other questions will be explored in this overview of flood planning which is firmly rooted in the Victorian context. With the State government formally announcing a shift to a new 'hazard based' planning approach and new VPP on the horizon, this course offers a chance to check in on the current state of play in planning for flood. Drawing on recent Parliamentary Inquiries and global concepts of best practice, this course will also explore the opportunities we have in front of us to 'do things better' and the questions we should be asking as practitioners.

## DESIGNED FOR

Town Planners, Urban designers, Allied professionals

## LEARNING OUTCOMES

Attendees will gain an understanding of how planning for flood is undertaken in Victoria and what recent changes may mean for how we plan. Attendees will also gain an understanding of different approaches and the types of questions planners may want to ask as they plan.

## COMPETENCY PRACTICE AREA

Understanding and working with planning frameworks.

## COURSE PRESENTER

**Jane Keddie MPIA** is a strategic planner, Director of Hansen Partnership and a leader in planning for climate change. She has worked for over 15 years on flood related strategic planning in Victoria and has appeared at a number of Inquiries and hearing providing expert input on planning for flood. She has worked on projects such as the Port Fairy Coastal & Structure Plan, Planning for coastal hazards around Port Phillip Bay, numerous land use plans for flood affected communities and IWM related projects as well as the award winning Planning Responses to Climate Change report.

**Date**

Tuesday, 8 September 2026

**Time**

9:30 AM - 5:00 PM

**Delivery**

Online - Hosted from VIC

**Price**

PIA Members \$345  
Non-members \$570

7  
CPD  
POINTS

## MANAGING POTENTIALLY CONTAMINATED LAND

Land contamination is a major issue for planners as former industrial, mining or commercial land is redeveloped for residential or other sensitive uses. Such sites may have been contaminated by former waste disposal, industrial and similar activities, and this is often discovered during changes to land use. These sites may present an unacceptable risk to human health or the environment, without some remediation or management. In most cases, the consideration of these issues and the management of potential risks are triggered by the planning process when a rezoning, redevelopment or change of use is being sought.

This course is designed to update participants' knowledge of current contaminated land issues and the tools used in planning to identify and assess potentially contaminated land, including the PSI, PRSA and Environmental Audits. These tools provide a consistent and proportionate screening assessment approach to assist planners. The course explains how statutory and strategic planners can identify potentially contaminated land; navigate the process using our PCL Assessment Framework; and ensure the outcomes of environmental audits are implemented effectively into planning decisions including planning permits and importantly, planning scheme amendments.

### DESIGNED FOR

Statutory and strategic planners in local government, planning and environmental consultants and lawyers involved in planning scheme amendments and permit applications who need to develop a greater competency and understanding in applying a range of planning tools to manage potentially contaminated land.

### LEARNING OUTCOMES

- Understand the Preliminary Risk Screening Assessment (PRSA) and scoped audit approach
- Learn how to apply the framework outlined in the Planning Practice Note 30: Potentially contaminated land
- Understand the regulatory framework that triggers consideration of potentially contaminated land in planning, including relevant changes to the environment legislation
- Learn how to identify what is potentially contaminated land, when a PRSA or environmental audit is required and how to implement the outcomes of an environmental audit into planning decisions
- Understand Ministerial Direction No. 1 and when to apply an Environmental Audit Overlay

- Learn how to apply the framework in the planning scheme amendment and planning permit processes
- Learn how to apply appropriate permit conditions
- Develop more confidence in managing the more complex aspects of potentially contaminated land in scheme amendments and planning permits

### COMPETENCY PRACTICE AREA

Developing and applying technical knowledge.

### COURSE PRESENTER

**Jean Meaklim** has a 30+-year career in government, industry, public health and environmental assessment. During 25 years across the Victorian Health Department and EPA, she developed extensive experience assessing and managing pollution and other environmental issues, including impacts on land development and planning, and now assists government and developers to find suitable land use solutions as an environmental consultant.

**Denise Turner MPIA (Fellow)** has over 30 years' experience in Victorian town planning across state and local government. She has extensive experience in all facets of land use planning as well as a range of environmental planning issues, having worked at EPA as their Senior Planning Adviser for 7 years. Denise's planning experience spans metropolitan, growth areas and regional areas.

#### Date

Thursday, 8 October 2026

#### Time

9.30 AM - 5:00 PM

#### Venue

Online - Hosted from VIC

#### Price

PIA Members \$345  
Non-members \$570

7  
CPD  
POINTS

## STRATEGIC PLANNING

### PROJECT MANAGEMENT FOR PLANNERS

This course is designed for planners and practitioners who are responsible for delivering strategic plans such as Housing Strategies, Urban Design Frameworks, Economic Development Strategies, Structure Plans and Heritage Studies. The course will look at all aspects of project management including development of the brief, project governance, community consultation, stakeholder engagement, budget management and managing the client / provider relationship. There will be a particular focus on ensuring that plans can be implemented (through the planning scheme, capital works budget and other channels).

#### DESIGNED FOR

- Strategic planners
- Economic development officers
- Community planners
- Sustainability and climate adaptation officers
- Open Space Planners

#### LEARNING OUTCOMES

- Understand what projects are, and what we are trying to achieve when we undertake them.
- Learn how to design and scope all elements of projects, including building a methodology, identifying detailed tasks, budgeting, stakeholder engagement and reporting.
- Learn frameworks to assist with initiating, planning, executing and implementing projects.
- Apply your learnings and prepare a project plan using a detailed template during the training session.

#### COMPETENCY PRACTICE AREA

Understanding, interpreting and using spatial thinking

#### COURSE PRESENTER

**Cazz Redding MPIA (Fellow), Director, Schemology**  
Cazz Redding runs Schemology (formerly known as Redink Planning), a town-planning consultancy based in north-east Victoria focussing on project management, strategic planning, drafting of planning scheme controls and training planners.

Cazz is an innovator and always on the lookout for better ways of doing things, to achieve efficiency in systems and processes, and deliver high quality outcomes for communities. She's a systems thinker and has the rare ability to excel in both the strategic planning space and the detailed delivery mechanisms.

In the last two decades Cazz has educated hundreds of planners at RMIT and through the PLANET program and has an open, honest and generous delivery style that keeps participants engaged and creates a safe environment to ask questions and explore ideas.

#### Date

Tuesday, 27 October 2026

#### Time

9:30 AM - 5:00 PM

#### Venue

Online - Hosted from VIC

#### Price

PIA Members \$345  
Non-members \$570

7  
CPD  
POINTS

## DESIGN

## INTRODUCTION TO URBAN REVITALISATION MASTERPLANNING

Masterplans have a critical impact in shaping the growth and development of our cities most significant precincts and communities - but how does one go about creating a masterplan?

This course will introduce participants to how design professionals approach precinct masterplanning in an urban renewal (brownfield) context, arming them with a sound design methodology and an overview of key technical considerations to allow them to better participate and influence the masterplan design process. This course will take place over one day in two sessions focussing on different areas of the masterplan process.

The theme of the first part of the course is 'Framework' - focussing on how masterplanners identify, test, and establish the 'big moves' of a masterplan, setting in place a clear but flexible framework for future development (built form). This will be explored through the key themes of connections, uses, and public realm and involve participants drawing on and discussing a real-world scenario.

The theme of the second part of the course is 'Form' - which will share how built form is tested through the masterplanning process to ensure that the masterplan will deliver good urban design outcomes. Design principles regarding scale, separation, interfaces, access and other elements typical to a mid-level masterplan will be discussed and participants will apply this knowledge in practical exercises.

### DESIGNED FOR

This course is targeted towards strategic planners, urban designers and town planners who have an interest, or are involved in, the development of precinct masterplans

### LEARNING OUTCOMES

- Learn a clear methodological approach to the masterplanning design process
- Gain confidence in engaging in and shaping the design of precinct masterplans.

### COMPETENCY PRACTICE AREA

Understanding, interpreting and using spatial thinking.

### COURSE PRESENTERS

This course is presented by **Urban Design Forum Australia**.

#### Date

Thursday, 7 May 2026

#### Time

9:30 AM - 5:00 PM

#### Venue

In Person - Venue TBC

#### Price

PIA Members \$345  
Non-members \$570

7  
CPD  
POINTS

## OPEN SPACES: LESS STRATEGIES - MORE STRATEGIC

Move beyond strategy for strategies sake. In this course you will learn how to structure yourself for strategic success and apply the right tools to assess how open spaces really perform. A practical half day course on positioning for success while exploring tools and technologies to measure park performance, function and user experience.

### LEARNING OUTCOMES

- Appreciate the aspects of open space that can be measured to better understand the quality of performance
- Be able to utilise a function/hierarchy classification framework to communicate quality of experience
- Understand the process, templates and inputs required to undertake performance assessments
- Recognise the role of communication, policy, planning and strategy to understand and utilise results of performance assessment

### COMPETENCY PRACTICE AREA

Understanding, interpreting and using spatial thinking.

### COURSE PRESENTER

This course is presented by **Kristin Davies**, National President, Parks and Leisure Australia.

#### Date

Thursday, 19 November 2026

#### Time

9:30 AM - 1:30 PM

#### Venue

Online

#### Price

PIA Members \$235  
Non-members \$390

NATIONAL

7  
CPD  
POINTS

## ECONOMICS

### INTRODUCTION TO DEVELOPMENT FEASIBILITY

NEW

This course is designed to provide planners a basic understanding of the key concepts that underpin development feasibility such as: development yield, gross realisation, construction costs, financing, profit, risk and residual land value. The course will also examine the impacts of planning on development feasibility including density controls, development contributions and affordable housing levies. It is intended for planners and other built environment professionals wanting to development their understanding on what makes development 'stack-up' and how the planning policies can impact the economics of development.

#### DESIGNED FOR

All planners and built environment professionals seeking to development and/or improve their understanding of development feasibility

#### LEARNING OUTCOMES

Participants will have an understanding of:

- Key concepts that underpin development feasibility assessment
- How residual land value is calculated
- Impacts on planning policies of development feasibility
- Influence of non-planning factors on development feasibility
- How planning policies can 'capture' land value.

#### COMPETENCY PRACTICE AREA

Developing and applying technical knowledge.

#### COURSE PRESENTER

**Andrew Spencer** is a Principal at SGS Economics and Planning and has 25 years of experience spanning planning, urban design and urban economics in both the public and private sector. He is deeply interested in how design, regulation and markets interact to shape cities. Andrew has undertaken numerous economic analysis of planning and design policies include cost-benefit analysis, value capture analysis and development feasibility studies, in collaboration with developers, valuers and quantity surveyors.

#### Date

Tuesday, 12 May 2026

NATIONAL

#### Time

9.30 AM - 1:30 PM

#### Venue

Online - Hosted from VIC

#### Price

PIA Members \$235  
Non-members \$390

7  
CPD  
POINTS

### THE TAXING QUESTION OF LAND AND PROPERTY – WHAT PLANNERS NEED TO KNOW ABOUT LAND & PROPERTY TAXATION

All forms of taxation entail trade-offs of equity and efficiency. This course provides built environment professionals with an overview of land and property taxation. We introduce key concepts in taxation before comparing different approaches to taxing land and property. How do developer charges affect development feasibility? Do increased taxes on property raise costs for homebuyers and businesses? Planners will gain understanding of how their work impacts land values, and how revenue policy can support the aims and objectives of planning.

#### DESIGNED FOR

Town planners and anyone with an interest in taxation and urban economics. It is aimed at those without a prior knowledge of property development or urban economics.

#### LEARNING OUTCOMES

- Understand the residual land value model that forms the basis for understanding the economic effects of planning on land values.
- Understand key concepts related to tax efficiency-including basis, incidence, & marginal excess burden.
- Understand key concepts related to tax equity with reference to planning and urban development processes – including beneficiary pays principle, land value capture, and betterment.

### COMPETENCY PRACTICE AREA

Using a creative and integrative approach, drawing on a range of disciplines.

### COURSE PRESENTER

**Dr. Tim Helm** is an economist with experience across a wide range of policy areas including transport economics, tax policy, gambling licensing and taxation, and environmental policy and more. He previously worked as an economist with Ernst & Young, as well as the Victorian Department of Treasury and Finance and the NZ Treasury. Tim holds a Masters degree in Commerce (Hons), University of Melbourne (2005) and Bachelors degrees in Commerce (Hons) and Science from Victoria University of Wellington. His PhD in Economics from the University of Melbourne focused on the economics of land tax.

#### Date

Monday, 1 June 2026 & Tuesday, 2 June 2026  
(2 half days)

#### Time

9:30 AM - 1:30 PM

NATIONAL

#### Venue

Online - Hosted from VIC

#### Price

PIA Members \$235  
Non-members \$390

7  
CPD  
POINTS

## INVESTING IN TRANSPORT

NEW

Do you want to get more out of your transport investments?

This course explores the critical role that transport investments in shaping regions, cities, precincts, and streets, thereby providing the strategic insight needed to determine how transport investments can better and more purposefully deliver on broader urban and regional planning strategies.

Participants will be better able to conceive transport projects that not only deliver direct transport benefits, but also create thriving economies, vibrant places and stronger communities. Participants will be introduced to business case methods and tools that will enable robust and efficient decisions on transport projects. The course will include practical exercises and case studies.

### DESIGNED FOR

Planning and infrastructure managers and leaders, Town planners, Strategic planners, Transport planners.

### LEARNING OUTCOMES

- Understand the critical role that planning plays in defining and justifying transport investments
- Define the transport investments that are needed to deliver planning visions and strategies
- Critique the merits of transport project investments
- Develop strategic business cases for transport and precinct projects

### COMPETENCY PRACTICE AREA

Understanding, interpreting and using spatial thinking

### COURSE PRESENTER

**Chris Tehan** is a transport strategy and business case expert with more than three decades of industry experience and leadership in both the public and private sector. Chris is passionate about strategically aligning transport investments to an intended vision or goal, enabling organisations to robustly choose the right projects, the best options and a targeted scope. Chris has framed the strategy and business cases for major city-shaping initiatives such as Melbourne Metro Rail Tunnel, Sydney CBD Light Rail and Melbourne Airport Rail. He also been involved in business cases for major precinct initiatives such as Fishermans Bend, Sunshine NEIC, Maribyrnong Defence Site, Werribee Employment Precinct, and the Transit Cities program.

#### Date

Wednesday, 3 June 2026

#### Time

9:30 AM - 5:00 PM

#### Venue

Online - Hosted from VIC

#### Price

PIA Members \$345  
Non-members \$570

7  
CPD  
POINTS

## ECONOMICS

## PRACTICAL GIS FOR PLANNING: MAP CREATION

This introductory course provides planners with a practical foundation in creating basic GIS maps for everyday planning work. It is designed for participants with little or no prior GIS experience who want to confidently produce clear, professional maps that can be used in reports, planning applications, and decision-making processes.

The course focuses on creating core planning maps, including locality and context maps, land use and zoning maps, constraint and overlay maps, and simple demographic and catchment maps. Emphasis is placed on producing maps that meet industry expectations for clarity, scale, symbology, labelling, and attribution, and that are suitable for inclusion in strategic plans, reports, submissions, and presentations.

Participants will work through a practical, end-to-end mapping workflow, from finding and assessing spatial data (including aerial imagery and census data) to map preparation and visualisation, and finally, exporting maps for use in reports and other planning outputs.

This course also highlights how planners can work more effectively with other planners and GIS support teams within their organisation or when engaging with consultants and clients, using shared data and consistent mapping approaches.

The course is delivered using QGIS, a free and open-source GIS platform available on both Mac and PC.

While all exercises are demonstrated in QGIS, the concepts and workflows taught are directly transferable to other commonly used GIS platforms, including ESRI ArcGIS and MapInfo.

### DESIGNED FOR

This course is designed for planners across public and private sectors who are new to GIS or want to strengthen their confidence in producing basic planning maps. It is suitable for strategic, statutory, environmental, social, community, transport, and economic planners who regularly need to include maps in reports, planning applications, or presentations, and who work with spatial data as part of their professional role.

### LEARNING OUTCOMES

By completing this course, participants will:

- Understand core GIS concepts relevant to planning practice
- Produce basic GIS maps that meet industry standards and are suitable for planning reports and applications
- Find, assess, and use commonly available spatial datasets such as aerial imagery and census data

- Apply consistent map design principles to improve clarity and communication
- Use QGIS to create planning maps and understand how these skills transfer to other GIS platforms
- Work more effectively with planners, GIS specialists, and external consultants using shared spatial data

### COMPETENCY PRACTICE AREA

Understanding, interpreting and using spatial thinking

### COURSE PRESENTER

**Dr. Daniel Paez** is a transport planner and policy specialist with over 15 years of experience in transport, land use, and strategic planning. He holds a PhD in Geomatics from the University of Melbourne and a Graduate Diploma in Law from the University of Canberra, and is currently studying a Juris Doctor. Daniel is an experienced lecturer and works with Swinburne University's Business and Law discipline as a sessional academic.

Alongside his academic work, Daniel has advised on complex policy reforms for Australian state and federal governments, as well as international organisations including the World Bank and the United Nations. His professional practice bridges technical spatial analysis and applied planning, supporting planners to produce clear, defensible, and decision-ready outputs that meet policy, regulatory, and organisational requirements.

#### Date

Tuesday, 23 June 2026

OR

Tuesday, 1 December 2026

NATIONAL

#### Time

9:30 AM - 5:00 PM

#### Venue

Online - Hosted from VIC

#### Price

PIA Members \$345

Non-members \$570

7  
CPD  
POINTS

## APPLIED GIS ANALYSIS & CARTOGRAPHY FOR PLANNING

This course supports planners to apply spatial analysis and produce clear, communicative maps that strengthen planning assessment and decision-making. It is designed as a stand-alone course for planners with varying levels of GIS experience who want to improve how spatial evidence is analysed, interpreted, and presented in professional planning contexts.

The course focuses on practical planning applications, including evaluating site feasibility using planning and environmental constraints, identifying spatial patterns and relationships across a study area, and assessing proximity, accessibility, and cumulative impacts.

Participants will learn how to apply spatial analysis in ways that directly inform planning judgments, options analysis, and recommendations.

A key component of the course is cartography as a communication tool. Participants will develop the ability to translate analytical outputs into clear, persuasive maps using principles of visual hierarchy, classification, colour, scale, and multi-variable representation. The emphasis is on producing maps that are fit for purpose and suitable for inclusion in planning reports, policy documents, and presentations.

Learning is delivered through applied exercises and real planning examples that demonstrate end-to-end workflows, from analysis through to interpretation and visualisation. The course also highlights effective collaboration with other planners and GIS specialists within organisations or when working with consultants, supporting the integration of spatial analysis and mapping into broader planning processes.

The course is delivered using QGIS, a free and open-source GIS platform available on both Mac and PC. While demonstrations are undertaken in QGIS, the analytical approaches and cartographic principles taught are directly transferable to other GIS platforms, including ESRI ArcGIS and MapInfo. This course complements Practical GIS for Planning: Map Creation and supports planners seeking to strengthen the analytical and communication aspects of their GIS practice.

### DESIGNED FOR

This course is designed for planners across public and private sectors who want to strengthen their spatial analysis and mapping communication skills. It is suitable for planners involved in strategic, statutory, environmental, social, community, economic, and transport planning who use spatial data to assess proposals, evaluate options, and communicate evidence to decision-makers and stakeholders.

### LEARNING OUTCOMES

By completing this course, participants will:

- Apply spatial analysis techniques to address common planning questions
- Interpret spatial relationships and patterns to support planning assessment
- Produce clear and communicative maps that support professional planning outputs
- Apply cartographic principles to improve clarity and visual impact
- Integrate spatial analysis and mapping into reports, policy documents, and presentations
- Use QGIS for planning analysis and understand how these skills transfer to other GIS platforms

### COMPETENCY PRACTICE AREA

Understanding, interpreting and using spatial thinking

### COURSE PRESENTER

**Dr. Daniel Paez** is a transport planner and policy specialist with over 15 years of experience in transport, land use, and strategic planning. He holds a PhD in Geomatics from the University of Melbourne and a Graduate Diploma in Law from the University of Canberra, and is currently studying a Juris Doctor. Daniel is an experienced lecturer and works with Swinburne University's Business and Law discipline as a sessional academic.

Alongside his academic work, Daniel has advised on complex policy reforms for Australian state and federal governments, as well as international organisations including the World Bank and the United Nations. His professional practice bridges technical spatial analysis and applied planning, supporting planners to produce clear, defensible, and decision-ready outputs that meet policy, regulatory, and organisational requirements.

#### Date

Tuesday, 7 July 2026

NATIONAL

#### Time

9:30 AM - 5:00 PM

#### Venue

Online - Hosted from VIC

#### Price

PIA Members \$345  
Non-members \$570

7  
CPD  
POINTS

## ECONOMICS

### EVIDENCE-BASED PLANNING WITH GIS DATA

NEW

This course focuses on the practical use of GIS to support planning decisions in environmentally constrained contexts. It is designed for planners who work with natural systems and environmental risk and need to interpret and apply spatial evidence related to water flows, climate change, vegetation, bushfire, and landscape constraints.

The course places a strong emphasis on raster datasets commonly used in planning practice, including elevation models, multi-spectral satellite imagery, vegetation and land-cover data, and climate- and hazard-related spatial datasets. Participants will learn how these datasets can be used to understand environmental processes and constraints that influence development feasibility and planning outcomes.

Through applied examples and hands-on exercises, participants will explore how environmental GIS data can be integrated with planning layers and CAD-based design information to assess impacts, inform policy responses, and support planning conditions. The focus is on producing clear and defensible spatial evidence that can be used in reports, referrals, and decision-making processes, while understanding the limits of environmental GIS data and the role of professional judgement.

#### DESIGNED FOR

This course is designed for strategic, environmental, statutory, and transport planners working in areas affected by environmental constraints. It is suitable for planners involved in flood-affected areas, climate adaptation planning, vegetation and habitat assessment, bushfire-prone landscapes, and other environmentally sensitive planning contexts. The course is also relevant for planners who work closely with designers, engineers, and environmental specialists and need to interpret GIS-based environmental evidence.

#### LEARNING OUTCOMES

By completing this course, participants will:

- Interpret key environmental raster datasets relevant to planning decisions
- Use GIS to assess environmental constraints and opportunities affecting development
- Integrate environmental data with planning layers and CAD design information
- Produce spatial evidence suitable for planning reports, referrals, and approvals
- Understand the limitations of environmental GIS data and apply professional judgement appropriately

### COMPETENCY PRACTICE AREA

Understanding, interpreting and using spatial thinking

#### COURSE PRESENTER

**Dr. Daniel Paez** is a transport planner and policy specialist with over 15 years of experience in transport, land use, and strategic planning. He holds a PhD in Geomatics from the University of Melbourne and a Graduate Diploma in Law from the University of Canberra, and is currently studying a Juris Doctor. Daniel is an experienced lecturer and works with Swinburne University's Business and Law discipline as a sessional academic.

Alongside his academic work, Daniel has advised on complex policy reforms for Australian state and federal governments, as well as international organisations including the World Bank and the United Nations. His professional practice bridges technical spatial analysis and applied planning, supporting planners to produce clear, defensible, and decision-ready outputs that meet policy, regulatory, and organisational requirements.

#### Date

Tuesday, 23 June 2026

OR

Tuesday, 1 December 2026

NATIONAL

#### Time

9:30 AM - 5:00 PM

#### Venue

Online - Hosted from VIC

#### Price

PIA Members \$345

Non-members \$570

7  
CPD  
POINTS

### CENSUS & DEMOGRAPHICS FOR STRATEGIC PLANNING

This course focuses on the practical use of Census and demographic data to support strategic planning and evidence-based decision-making. It is designed for planners and related professionals who need to understand population characteristics, trends, and change over time, and apply this evidence to policy development, planning strategies, and investment decisions.

The course introduces participants to Australian Census data, with a focus on how demographic information can be accessed, interpreted, and applied using online tools provided by the Australian Bureau of Statistics. Using the most recent Census data alongside historical datasets, participants will learn how to analyse population structure, growth, housing, workforce, and socio-economic characteristics at different geographic scales. Emphasis is placed on understanding what the data can reliably support, how to compare places over time, and how demographic evidence informs planning priorities and strategic responses.

Through practical examples, participants will learn how to extract and manage demographic data as spreadsheets for further analysis, and how to work with Census data within GIS environments such as QGIS and other GIS platforms. The course focuses on producing clear demographic outputs, including tables, charts, and maps, that can be confidently used in planning reports, strategies, and presentations, while recognising data limitations and the importance of professional interpretation.

### DESIGNED FOR

This course is designed for strategic, statutory, transport, and social planners who use demographic evidence to inform planning decisions. It is also suitable for practitioners in the public and private sectors who work with population data, including engineers, researchers, educators, property and development professionals, and others involved in urban and regional analysis. The course is relevant for those seeking to strengthen their ability to interpret demographic trends and apply them meaningfully in planning and policy contexts.

### LEARNING OUTCOMES

By completing this course, participants will:

- Understand the structure and key components of Australian Census data
- Use Australian Bureau of Statistics online tools to access and analyse demographic data
- Analyse demographic data for specific geographic areas and planning contexts
- Export and manage demographic data as spreadsheets for further analysis
- Work with Census and demographic data in GIS platforms
- Produce clear tables, charts, and maps to support strategic planning outputs
- Apply demographic evidence appropriately while recognising data limitations

### COMPETENCY PRACTICE AREA

Developing and applying technical knowledge.

### COURSE PRESENTER

**Dr. Daniel Paez** is a transport planner and policy specialist with over 15 years of experience in transport, land use, and strategic planning. He holds a PhD in Geomatics from the University of Melbourne and a Graduate Diploma in Law from the University of Canberra, and is currently studying a Juris Doctor. Daniel is an experienced lecturer and works with Swinburne University's Business and Law discipline as a sessional academic.

Alongside his academic work, Daniel has advised on complex policy reforms for Australian state and federal governments, as well as international organisations including the World Bank and the United Nations. His professional practice bridges technical spatial analysis and applied planning, supporting planners to produce clear, defensible, and decision-ready outputs that meet policy, regulatory, and organisational requirements.

#### Date

Wednesday, 18 November 2026

NATIONAL

#### Time

9:30 AM - 5:00 PM

#### Venue

Online - Hosted from VIC

#### Price

PIA Members \$345  
Non-members \$570

7  
CPD  
POINTS

## SUSTAINABILITY

### URBAN ECOLOGY AND BIODIVERSITY FOR PLANNERS

This course explores how we can plan for improved biodiversity and ecosystems in cities in Victoria. The Course will identify why urban biodiversity is important, threats to local biodiversity and planning mechanisms that can be used to reduce these threats. It will also explore how cities provide opportunities for improved biodiversity outcomes, and how biodiversity can contribute to more liveable and healthy cities. The course will explore how urban biodiversity intersects with:

- Global, National and State policy frameworks such as the Global Biodiversity Framework and the Sustainable Development Goals, the EPBC Act and the Melbourne Strategic Assessment;
- Local biodiversity strategies and action plans such as the City of Melbourne's Nature in the City Strategy and the Knox Biodiversity Resilience Strategy 2024-2034;
- Conservation planning tools such as mapping biodiversity corridors and conservation reserve design;
- The Victorian Planning Scheme and local planning processes, including neighbourhood character, landscape planning, development permits and open space planning;
- Other local government functions such as supporting community health and wellbeing, recreation, heritage and sense of place.

#### DESIGNED FOR

Town planners, urban designers, open space planners, strategic planners, and other professionals interested in understanding how to minimise risks to biodiversity and maximise benefits from urban nature in cities.

#### LEARNING OUTCOMES

- Gain an understanding of the global to local policy frameworks supporting and promoting urban ecology and biodiversity, the threats to and benefits from urban biodiversity, and how nature can contribute to improved liveability of cities and wellbeing of local people.
- Develop the ability to evaluate opportunities to improve biodiversity outcomes across a range of planning scenarios, and apply planning tools to improve outcomes for biodiversity in local and open space planning, and in developing biodiversity strategy.

#### COMPETENCY PRACTICE AREA

Understanding, interpreting and using spatial thinking

#### COURSE PRESENTER

##### Dr Dave Kendal, Director, Future in Nature

Dave is an internationally recognized expert on urban nature-based solutions, urban forests, climate adaptation and biodiversity conservation. He is a co-author of the Urban Biodiversity Playbook and led research on threatened species in Australian cities. He currently co-leads the Oceania region of the IUCN Specialist Group on Urban Ecosystems. Dave was a member of Australia's Threatened Species Scientific Committee from 2015-2019. He has worked at the University of Tasmania, the University of Melbourne, and the Royal Botanic Gardens Melbourne. In 2022, Dave started Future in Nature to have a greater impact on nature-related policy and programs in Australia and around the world.

#### Date

Wednesday, 2 September 2026

#### Time

9.30am - 1:30pm

#### Venue

In Person - Venue TBC

#### Price

PIA Members \$235  
Non-members \$390

**3.5**  
CPD  
POINTS

### PLANNING FOR RESILIENT URBAN FORESTS

Urban Forest Strategies have been widely adopted by municipalities across Victoria. This course explores how we can plan for resilient urban forests in Victoria. The Course will identify the multiple benefits of urban forests, their role in adapting cities to climate change, and explore the resilience of urban forests to climate change and urban heat.

The Course will explore contemporary approaches to urban forest planning including:

- Understanding urban forest tree asset and canopy data to improve decision making;
- Tools to assess the known climate suitability of urban forest species;
- Measuring change in urban forest canopy over time;
- Using indicators to understand the multiple benefits of urban forests;
- Engaging the community through values-based workshops;
- Planning for urban forests on private land.

### DESIGNED FOR

Town planners, urban designers, open space planners, strategic planners, and other professionals interested in urban forests.

### LEARNING OUTCOMES

- Understand the multiple benefits of urban forests, and the key data needed to make informed decisions about the urban forests.
- Gain the ability to evaluate how planning decisions will affect the urban forest, and apply a range of tools such as the Climate Assessment Tool to improve decision making about the urban forest.

### COMPETENCY PRACTICE AREA

Understanding, interpreting and using spatial thinking

### COURSE PRESENTER

#### Dr Dave Kendal, Director, Future in Nature

Dave is an internationally recognized expert on urban nature-based solutions, urban forests, climate adaptation and biodiversity conservation. He is a coauthor of the Urban Biodiversity Playbook and led research on threatened species in Australian cities. He currently co-leads the Oceania region of the IUCN Specialist Group on Urban Ecosystems. Dave was a member of Australia's Threatened Species Scientific Committee from 2015-2019. He has worked at the University of Tasmania, the University of Melbourne, and the Royal Botanic Gardens Melbourne. In 2022, Dave started Future in Nature to have a greater impact on nature-related policy and programs in Australia and around the world.

**Date**  
TBC

**Time**  
9.30am - 1:30pm

**Venue**  
Online - Hosted from VIC

**Price**  
PIA Members \$235  
Non-members \$390

**3.5**  
CPD  
POINTS

## HERITAGE

## ABORIGINAL CULTURAL HERITAGE- AN OVERVIEW OF REQUIREMENTS AND RESPONSIBILITIES FOR PLANNERS WORKING IN LGAS'

The Aboriginal Heritage Act 2006 (the Act) and the Aboriginal Heritage Regulations 2018 prescribes mechanisms and protections for Aboriginal cultural heritage relevant to local government authorities. The course will provide planners with a comprehensive overview of legislative responsibilities and requirements under the Act and Regulations – the primary pieces of legislation providing protection for Aboriginal cultural heritage in Victoria; and equip planners with an increased understanding of when and how Aboriginal cultural heritage is linked to the planning system and when and how Aboriginal cultural heritage needs to be considered in relation to development and high impact activities.

### DESIGNED FOR

Town planners, urban designers, planning lawyers, and strategic planners working for Local Government Authorities.

### LEARNING OUTCOMES

- Gain a comprehensive understanding of considerations of Aboriginal cultural heritage
- Understand legislative requirements and responsibilities under the Act and regulations as they relate to planning processes
- Understand when a Cultural Heritage Management Plan (CHMP) is required – particularly as relating to significant ground disturbance.

### COMPETENCY PRACTICE AREA

Developing and applying technical knowledge

### COURSE PRESENTER

The course will be delivered by Aboriginal Victoria's Heritage Services Unit staff.

#### Date

Thursday, 26 March 2026 OR Tuesday, 28 July 2026

#### Time

10:00 AM - 1:00 PM

#### Venue

Online - Hosted from VIC

#### Price

PIA Members \$170  
Non-members \$220

2.5  
CPD  
POINTS

## WORKING WITH THE HERITAGE OVERLAY AND YOUR HERITAGE ADVISOR

NEW

This course aims to equip town planners with a clear understanding of the statutory and strategic frameworks that guide heritage planning in Victoria. It introduces key concepts of cultural significance and explains the process for identifying heritage places. The course introduces the purpose and operation of the Heritage Overlay in the context of the Victoria Planning Provisions and other State and Commonwealth heritage designations. It will discuss the application of permit triggers and the role of Statements of Significance in statutory decision making. Participants will learn to apply State and local heritage policy and prepare robust, heritage informed recommendations informed by Council's heritage advisor and other guidance. The program also builds practical skills in working with heritage advisors and balancing heritage within broader planning objectives.

### DESIGNED FOR

Town planners, strategic planners, statutory planners

### LEARNING OUTCOMES

- Explore the concept of 'heritage' and how it is recognised in Victoria
- Understand the purpose and operation of the Heritage Overlay in the context of the Victoria Planning Provisions
- Identify common permit triggers
- Apply Clauses 15.03 1S, 15.03 1L, and 43.01 and heritage guidelines during permit assessment
- Interpret and apply Statements of Significance (SoS)
- Work effectively with heritage advisors
- Balance heritage considerations with other planning policies

### COMPETENCY PRACTICE AREA

Understanding and working with planning frameworks.

### COURSE PRESENTER

**Jim Gard'ner** is a registered architect with experience in heritage spanning the private, public, and not-for-profit sectors in Australia, New Zealand and the United Kingdom. He is a former Executive Director of Heritage Victoria and has led the assessment, conservation, and management of heritage places in private practice and with English Heritage, and the National Trust of Australia (Victoria).

**Rena Jarman** is a planner with extensive experience in heritage in the public and private sectors.

Renae previously managed the statutory functions of Heritage Victoria and worked in local government as strategic planner specialising in heritage. Renae has led heritage studies and associated planning scheme amendments as well as developing heritage strategies and policies for State and local government.

**Date**

Thursday, 16 July 2026

**Time**

9:30 AM - 5:00 PM

**Venue**

Online - Hosted from VIC

**Price**PIA Members \$345  
Non-members \$5707  
CPD  
POINTS

## STRATEGIC HERITAGE PLANNING: VALUES, MODELS AND CONTEMPORARY CHALLENGES

NEW

Successful heritage planning requires more than just statutory compliance; it demands a robust strategic framework grounded in cultural values. This course guides strategic planners and heritage officers through the lifecycle of heritage strategy—from the foundational principles of the Burra Charter to the realisation of cutting-edge heritage outcomes.

Participants will first revisit the "values-based approach," learning how to translate aesthetic, historic, social, and scientific significance into defensible strategic policy. We will examine how these heritage values interact with competing pressures, including economic viability, urban design, and sustainability goals.

Critically, the course addresses the defining challenges of the late 2020s. We will explore how to future-proof heritage strategies by integrating climate resilience (adaptation and retrofitting), engaging diverse community voices, and fostering design-led conservation. Drawing on local and international examples that are leading the way, this masterclass demonstrates how to transform heritage from a regulatory hurdle into a key driver of urban identity and sustainability.

**DESIGNED FOR**

Strategic planners, policy managers, urban designers, heritage officers, and consultants involved in the preparation of Heritage Studies, Municipal Heritage Strategies, Structure Plans, or Thematic Environmental Histories.

**LEARNING OUTCOMES**

By the end of this course, participants will be able to:

- Apply the Burra Charter: Utilise the Burra Charter process to ground strategic decision-making in a rigorous understanding of cultural significance.
- Operationalise Values: Translate intangible concepts—such as social, spiritual, and community values—into tangible planning policy and local strategies.
- Develop Strategy: Structure a comprehensive Local Government Heritage Strategy that aligns with Council Plans and broader planning, economic and sustainability goals.
- Address Climate Change: Develop policy frameworks that support adaptive reuse and the environmental retrofitting of heritage assets.
- Enhance Inclusivity: Implement people-centred engagement techniques to capture diverse community narratives and underrepresented voices.
- Promote Design Excellence: Formulate "design-led" heritage policies that encourage high-quality contemporary interventions.

**COMPETENCY PRACTICE AREA**

Using a creative and integrative approach, drawing on a range of disciplines.

**COURSE PRESENTER**

**Dr James Lesh** is a historian, heritage specialist, and the founding director of Heritage Workshop – a consultancy delivering innovative solutions in heritage planning, policy, placemaking and research. A recognised thought leader, James has published extensively on the theory and history of the field. He holds a PhD from the University of Melbourne and has held research and teaching positions across Australia and the United Kingdom.

**Date**  
TBC**Time**  
9:30 AM - 5:00 PM**Venue**  
Online - Hosted from VIC**Price**  
PIA Members \$345  
Non-members \$5707  
CPD  
POINTS

## COMMUNICATION &amp; ENGAGEMENT

SMARTER REPORTS WITH  
GENERATIVE AI

Producing clear, defensible, and decision-ready reports is a core requirement of contemporary planning practice. This course focuses on how planners can use generative AI to produce smarter reports that are faster to develop, more consistent in quality, and better aligned with professional, organisational, and regulatory expectations.

Rather than treating AI as a shortcut, the course positions it as a support tool within a structured reporting workflow. Participants will learn how to use generative AI to assist with drafting, structuring, editing, and refining key planning documents such as background reports, strategic plans, policy options papers, submissions, and internal briefing notes, while maintaining professional judgement and accountability. Through practical, planner-focused exercises and real-world examples, participants will work through end-to-end workflows that demonstrate how AI can help transform technical inputs and complex evidence into clear, well-structured narratives suitable for decision-makers, stakeholders, and statutory contexts. Emphasis is placed on improving clarity, consistency, tone, and persuasiveness, particularly when communicating with non-technical audiences.

The course also addresses the responsible and defensible use of generative AI in planning organisations. Participants will learn how to critically review AI-generated content, manage accuracy and bias, and understand ethical, legal, privacy, and intellectual property considerations relevant to both public and private planning environments. These considerations are embedded within practical reporting scenarios to ensure participants can confidently apply AI in real planning contexts.

The course is platform-agnostic and focuses on transferable principles and workflows that apply across current generative AI tools, ensuring skills remain relevant as technologies evolve.

## DESIGNED FOR

This course is designed for land use, strategic, environmental, and social planners who want to improve the quality, clarity, and efficiency of their written outputs. It is suitable for planners working in local government, state agencies, consultancies, and related organisations who are responsible for preparing reports, policies, submissions, and briefing material.

## LEARNING OUTCOMES

By completing this course, participants will:

- Apply structured workflows to draft, edit, and refine planning reports and policies using generative AI

- Produce clearer and more consistent planning documents that meet professional and organisational standards
- Critically assess AI-generated content for accuracy, relevance, and suitability in planning contexts
- Adapt tone, structure, and language to suit different audiences, including decision-makers and non-technical stakeholders
- Integrate generative AI into planning workflows in a responsible, ethical, and defensible manner

## COMPETENCY PRACTICE AREA

Professionalism and Integrity

## COURSE PRESENTERS

**Dr. Daniel Paez** is a transport planner and policy specialist with over 15 years of experience in transport, land use, and strategic planning. He holds a PhD in Geomatics from the University of Melbourne and a Graduate Diploma in Law from the University of Canberra, and is currently finishing a Juris Doctor. Daniel has advised on complex policy reforms for Australian state and federal governments, as well as international organisations, including the World Bank and USAID. His work includes working with local governments producing high-level reports, strategic planning documents, and policy submissions that meet regulatory and governance requirements.

**Megan Edwards** is a professional writer, educator, and communications expert with over 25 years' experience helping professionals develop clear, confident, and effective written communication. She holds qualifications in marketing, psychology, and law, along with certifications in coaching, mindfulness, and public speaking. Megan has worked with a wide range of industry associations and major organisations, including the AICD, CAFBA, CBRE, and Pearson Education, supporting professionals to develop their own writing voice and communicate complex ideas with clarity and impact.

## Date

Wednesday, 8 April 2026 OR  
Tuesday, 10 November 2026

NATIONAL

## Time

9:30 AM - 5:00 PM

## Venue

Online - Hosted from VIC

## Price

PIA Members \$345  
Non-members \$570

7  
CPD  
POINTS

## FACILITATION SKILLS FOR PLANNERS

As planners and policy makers, working in interdisciplinary teams, engaging with multiple stakeholders and consulting with community members have all become part of our role. The skills to work effectively with a group, support collaboration and bring different parties to a decision are not something we learn through our technical training. Very often planners are thrown in the 'deep end' to sink or swim!

In this course we will identify and apply strategies and techniques to better plan and design our meetings and workshops and the key skills you can use in the room to support participation. Group facilitation is something that we learn by doing and observing, this is a highly interactive session, in which we will work together to apply facilitation skills and building confidence to step into the room and support more effective dialogue and engagement.

### DESIGNED FOR

Planners, designers and policy makers who want to work more effectively in group situations.

### LEARNING OUTCOMES

- Strategies to plan and design meetings and workshops to be more productive.
- Skills to support inclusive participation by group members.
- Strategies for working with conflict and difficult group dynamics.
- Tools for supporting group members to reach agreement.

### COMPETENCY PRACTICE AREA

Communicating and engaging with stakeholders

### COURSE PRESENTER

#### Michelle Howard MPIA (Fellow)

Michelle Howard is a Fellow of the Planning Institute of Australia and an internationally accredited facilitator and strategic planner. As Managing Director of Collaborations, she has worked on planning, design and infrastructure projects across Australia for the past 30 years. Michelle's skills in stakeholder engagement and strategic planning have been sought after by public, private and not-for-profit organisations. She has a reputation for working with diverse constituencies and managing complex issues of change. Michelle is an experienced trainer and mentor within the urban planning and community engagement sectors. Building on the principles of best-practice in adult learning, her approach is highly interactive and engaging.

#### Date

Thursday, 23 April 2026

NATIONAL

#### Time

9:30 AM - 5:00 PM

#### Venue

Online - Hosted from VIC

#### Price

PIA Members \$345

Non-members \$570

7  
CPD  
POINTS

## WORKING WITH CONFLICT

NEW

All planning involves working with change and choices about the future of communities, place, impacts and benefits. As planners we are often working with competing needs and values, where differences of opinion are accompanied by high emotions. But conflict doesn't need to be a destructive force on our projects or in our communities. With skills and practice, we can work with conflict to support innovation and creative thinking.

In this course we will explore strategies to better engage with and understand the perspectives of different stakeholders, manage expectations, build understanding and identify opportunities for alignment. The workshop will be highly interactive and experiential, with the opportunity to apply key tools and strategies to issues that participants are working with in their own practice.

### DESIGNED FOR

Planners, designers and policy makers who are working on projects with multi-stakeholder and/or community involvement.

### LEARNING OUTCOMES

- Understanding how conflict occurs.
- Strategies to identify stakeholder perspectives and manage expectations.
- Strategies for working with strong emotions.
- Tools for building understanding and alignment to inform decision-making.

### COMPETENCY PRACTICE AREA

Communicating and engaging with stakeholders

## COMMUNICATION & ENGAGEMENT

### COURSE PRESENTER

Michelle Howard MPIA (Fellow)

Michelle Howard is a Fellow of the Planning Institute of Australia and an internationally accredited facilitator and strategic planner. As Managing Director of Collaborations, she has worked on planning, design and infrastructure projects across Australia for the past 30 years. Michelle's skills in stakeholder engagement and strategic planning have been sought after by public, private and not-for-profit organisations. She has a reputation for working with diverse constituencies and managing complex issues of change. Michelle is an experienced trainer and mentor within the urban planning and community engagement sectors. Building on the principles of best-practice in adult learning, her approach is highly interactive and engaging.

This practical and engaging session bridges the gap between data complexity and actionable solutions, equipping planners to confidently tackle modern challenges.

### DESIGNED FOR

Town planners, strategic planners who wish to communicate with data

### LEARNING OUTCOMES

- Learn design principles to communicate data to a specified audience
- Learn the basics of combining different datasets and choosing the right visualisations to allow others to explore and understand data more effectively
- Gain experience in building a dashboard using PowerBI

### COMPETENCY PRACTICE AREA

Using a creative and integrative approach, drawing on a range of disciplines.

### COURSE PRESENTERS

#### Jan Christopher Quing PIA (Assoc.)

Jan is an urban planner, data analyst, and web developer with a passion for leveraging technology and data to inform policy and decision-making. With a background in software development and over three years in IT, he now applies his expertise at SGS and serves on the Planning Institute of Australia's PlanTech Working Group.

#### Aline Raad

Aline is a senior consultant with over a decade of experience in the built environment, specialising in integrating geospatial data analytics into urban planning. As an architect and urban planner, she has contributed to city-shaping projects globally. Since joining SGS in 2022, she has focused on strategic planning, governance models and housing strategies.

#### Date

Thursday, 11 June 2026

NATIONAL

#### Time

9:30 AM - 5:00 PM

#### Venue

Online - Hosted from VIC

#### Price

PIA Members \$345  
Non-members \$570

7  
CPD  
POINTS

## DASHBOARD DESIGN AND DEVELOPMENT FOR PLANNERS

Effective urban planning relies on actionable insights drawn from diverse and complex datasets. This course will introduce participants to data and design concepts, with hands-on exercises to allow them to build intuitive, data-driven dashboards.

The course begins with foundational principles of dashboard design, focusing on clarity, hierarchy, usability, and storytelling through data visualisation. Participants will explore best practices for selecting visualisations, prioritising information, and aligning design choices with their respective goals. A hands-on session will guide attendees through building dashboards using PowerBI, integrating a selection of sample datasets, and ensuring adaptability for various stakeholders. By the end of the course, urban planners will have the skills to design and develop dashboards that enhance decision-making, streamline communication, and foster collaboration.

#### Date

Tuesday, 16 June 2026

NATIONAL

#### Time

9:30 AM - 5:00 PM

#### Venue

Online - Hosted from VIC

#### Price

PIA Members \$345  
Non-members \$570

7  
CPD  
POINTS

## EMOTIONAL FITNESS

Planning can be a high-pressure career. From dealing with stressed clients, difficult decisions, personal challenges and daily uncertainties.

We sometimes wonder whether we are doing enough and at times whether we are enough to handle what comes.

At the core of all our experiences and interactions are emotions.

When we know how to emotionally manage and lead ourselves and others effectively, we not only lead but we inspire others to step up and grow.

This course will equip you with hands on, grounded and practical skills to add or improve your emotional fitness.

These skills will enable you to become a strong leader, capable of inspiring others and more capable of dealing with difficult decisions and setbacks.

### DESIGNED FOR

Anyone who wants to improve how they manage uncertainties in both their career and personal relationships.

### LEARNING OUTCOMES

- Understand our core behavioural drivers so we can lead fulfilling lives.
- Be significantly better equipped to handle inevitable challenges.
- Learn how to handle the uncertainties and ambiguities life gives us.
- Understand why some people trigger you and how to change your experience.

### COMPETENCY PRACTICE AREA

Professionalism and Integrity

### COURSE PRESENTERS

#### Joe Pane

Joe has been working full time in the field as a professional trainer of emotional intelligence since 2006. He is also degree qualified in psychology and sociology. He is the creator of The Emotional Fitness Formula, his most popular program to date. This program helps people deepen their self-awareness and significantly help improve both personal and professional relationships.

His range of clients include Jones Lang LaSalle, Flight Centre, ANZ, Department of Defence, Ray White, Hocking Stuart, The Coaching Institute, OAMPS Insurance, Coles Group, Benetas, and NBN.

#### Date

Thursday, 1 October 2026

NATIONAL

#### Time

9:30 AM - 5:00 PM

#### Venue

Online - Hosted from VIC

#### Price

PIA Members \$345

Non-members \$570

7  
CPD  
POINTS



Planning  
Institute  
Australia